

Kenmore Holsteins

Milking Herd Dispersal



Monday, October 14, 2019
Downing, Wisconsin

Kenmore Holsteins

Milking Herd Dispersal

MONDAY, OCTOBER 14, 2019 • 11:00 AM • DOWNING, WISCONSIN

AT THE FARM: From Knapp, WI: One mile west on US Highway 12, then north on County Highway Q for 1 1/4 mile, then continue north on 130th St for 2 1/2 miles to farm.

Sale Personnel

TIM SCHINDLER
715-223-4014
WI Auctioneer #191

DON MAYER
715-829-3417
Pedigrees

RANDY MEYER
715-630-0776
Ringman

KEN CHRISTENSEN
715-223-6345
Ringman & Clerk

Terms of Sale

All purchases must be settled for on sale day, cash or good check.
Contact Christensen Sales prior to sale if credit is desired.

Herd Facts

Ag Source Herd Code 35170878

This is a very young herd with the majority of the cows in their 1st or 2nd lactations. Only the very best sires have been used with daughters of Armani, Jedi, Atwood, Pety, Montross, Delta, Modesty and Pat-Red selling. The cows are housed in a tie-stall barn and are left out daily for exercise. There are several Red & White cows selling with several more that are Red Carriers. Bulk tank SCC runs in 100 to 200,000 range.

Owners

KEN & PAM LARSON
N9116 130th St., Downing, WI 54734
715-643-3382

Sale Manager

CHRISTENSEN SALES CORPORATION
Abbotsford, WI • Auction Co. #33
715-223-6345 or fax 715-223-6510
www.christensensales.com • info@christensensales.com



KHW REGIMENT APPLE-RED-ET EX-96 4E DOM
2ND DAM OF LOT 1 & 4

1

RI-VAL-RE MRS DELTA-ETS

3126003430 Very Good-86 VG-MS @ 3-04 99%RHA
 Born: April 23, 2015
 GTPI +2524G +3.09UDC 8/19

Fresh: June 10, 2019
 Milking 76 lbs/day SCC 17

Sells open and ready to flush

Mounfield SSI Dcy Mogul-ET

3006972816 EX-93 GM 8/15 TR TP TC TY TL TD
 PTA +1086M +71F +36P 99R 8/19
 PTA +2.19T +3.13UDC +2.01FLC GTPI +2335G

Miss OCD Robst Delicious-ET

3006989479 Very Good-87 GMD DOM
 2-05 2x 365d 33780 3.3 1121 3.3 1111

De-Su Bkm McCutchen 1174-ET

69990138 Excellent-93 GM 8/15 TR TP TC TY TV TL
 PTA +807M +50F +30P 99R 8/19
 PTA +3.08T +2.43UDC +1.93FLC GTPI +2248G

KHW Regiment Apple-Red-ET

135511521 Excellent-96 EEEEE 4E DOM CV
 9-01 2x 365d 36750 4.3 1582 3.5 1280
 4-01 2x 365d 35754 4.1 1682 3.7 1314
 7-00 2x 365d 33280 5.0 1654 3.6 1191
 5-03 2x 365d 30810 5.0 1527 3.9 1212
 Life: 2898d 240640 4.7 11394 3.7 9013

Apple!

- Res All-American R&W 125,000 Lb Cow 2014
- Unanimous All-American 2006, 2011, 2013
- Unanimous All-American R&W Aged Cow 2011
- Grand Champion International R&W Show 2011
- World Champion R&W Cow Holstein Int'l 2010
- Res Grand Champion R&W RAWF 2009
- Res All-Canadian R&W 5-Yr-Old Cow 2009
- Nom All-American 5-Yr-Old Cow 2009
- HHM All-American Jr 3-Yr-Old Cow 2007
- Unanimous All-American Jr 2-Yr-Old Cow 2006

Mr Mogul Delta 1427-ET

72128216 GM 8/19 TR TC TY TV TL TD
 PTA +1613M +88F +54P 99R 8/19
 PTA +7.4PL 2.90SCS +0.4DPR 4.2%DCE
 PTA +2.12T +2.82UDC +1.48FLC 99R 8/19
 GTPI +2698G

Ms Apples MC Valentine-ET

71259307 Excellent-90 EX-MS RC TL TD
 4-10 2x 334d 29600 4.8 1410 3.7 1102
 2-03 2x 365d 28250 4.5 1264 3.5 976
 3-09 2x 338d 27710 4.4 1213 3.4 952

3rd thru 8th Dams

Kamps-Hollow Altitude-ET EX-95 2E DOM RC CV

7-00 2x 365d 39690 4.7 1849 3.5 1385
 Life: 1844d 144460 4.4 6295 3.7 5288

Clover-Mist Alisha-ET EX-93 3E DOM

8-07 2x 365d 36920 4.2 1553 3.4 1258
 Life: 2999d 226470 4.7 10659 3.6 8149

Clover-Mist Augy Star-ET EX-94 4E DOM

7-10 2x 365d 43140 5.0 2136 3.3 1421
 Life: 2486d 206250 4.7 9793 3.5 7187

D-R-A August EX-96 4E DOM

8-05 3x 365d 27460 4.3 1187 3.2 871
 Life: 3443d 190200 4.4 8281 3.5 4818

- Nominated All-American Aged Cow 1986

D-R-A Ideal Precious Leader EX-90 2E

Life: 2456d 133250 4.0 5308

D-R-A Princess Lad Leader EX-90 3E

Kenmore Holsteins Milking Herd Dispersal



KAMPS-HOLLOW ALTITUDE-ET EX-95 2E DOM RC
3RD DAM OF LOTS 1 & 4

2

KENMORE LUCKY STRIKE-RED-ET

3143029888 PO 99%RHA-I
Born: September 7, 2017
GTPI +2499G +3.12UDC 8/19

Fresh August 13, 2019
Milking 66 lbs/day SCC 15

Zimmerview Lucky PP-Red-ET

74228150 PP TY TV TL TD
PTA +313M +19F +23P 83R 8/19
PTA +7.6PL 2.61SCS+1.6DPR 3.1%DCE
PTA +1.01T +2.03UDC +1.35FLC 79R 8/19
GTPI +2307G

Ri-Val-Re Mrs Delta-ETS

3126003430 Very Good-86 VG-MS @ 3-04
GTPI +2524G +3.09UDC 8/19
Sells as Lot 1

3rd Dam

Ms Apples MC Valentine-ET EX-90 EX-MS RC
4-10 2x 334d 29600 4.8 1410 3.7 1102

4th Dam

KHW Regiment Apple-Red-ET EX-96 4E DOM
9-01 2x 365d 36750 4.3 1582 3.5 1280
Life: 2898d 240640 4.7 11394 3.7 9013
• *Unanimous All-American 2006, 2011, 2013*

Mr Mogul Delta 1427-ET

72128216 GM 8/19 TR TC TY TV TL TD
PTA +1613M +88F +54P 99R 8/19
PTA +2.12T +2.82UDC +1.48FLC GTPI +2698G

Ms Apples MC Valentine-ET

71259307 Excellent-90 EX-MS RC TL TD
4-10 2x 334d 29600 4.8 1410 3.7 1102
2-03 2x 365d 28250 4.5 1264 3.5 976
3-09 2x 338d 27710 4.4 1213 3.4 952

3

KENMORE HEIRLOOM-ET

3143029857 RC TV TL TD 99%RHA-I
Born: May 3, 2017
GTPI +2545G 8/19

Fresh: September 10, 2019
Milking 70 lbs/day SCC 93

Bacon-Hill Pety Modesty-ET

3013654627 Very Good-86 GM 8/18 TR TP TC TV TY
PTA +785M +70F +38P 99R 8/19
PTA +6.9PL 3.27SCS +1.0DPR 2.4%DCE
PTA +.89T +2.09UDC +1.32FLC 99R 8/19
GTPI +2464G

Ri-Val-Re Mrs Delta-ETS

3126003430 Very Good-86 VG-MS @ 3-04
GTPI +2524G +3.09UDC 8/19
Sells as Lot 1

3rd Dam

Ms Apples MC Valentine-ET EX-90 EX-MS RC
4-10 2x 334d 29600 4.8 1410 3.7 1102

4th Dam

KHW Regiment Apple-Red-ET EX-96 4E DOM
9-01 2x 365d 36750 4.3 1582 3.5 1280
Life: 2898d 240640 4.7 11394 3.7 9013
• *Unanimous All-American 2006, 2011, 2013*

Mr Mogul Delta 1427-ET

72128216 GM 8/19 TR TC TY TV TL TD
PTA +1613M +88F +54P 99R 8/19
PTA +2.12T +2.82UDC +1.48FLC GTPI +2698G

Ms Apples MC Valentine-ET

71259307 Excellent-90 EX-MS RC TL TD
4-10 2x 334d 29600 4.8 1410 3.7 1102
2-03 2x 365d 28250 4.5 1264 3.5 976
3-09 2x 338d 27710 4.4 1213 3.4 952

4

RI-VAL-RE LIL APPLE-ETS

3126003444 Good Plus-84 VG-MS @ 3-04 99%RHA
Born: April 23, 2015
GTPI +2513G +2.77T +2.99UDC 8/19

Fresh: June 13, 2019
Milking 76 lbs/day SCC 13

Sells open & ready to flush

Mr Mogul Delta 1427-ET

72128216 GM 8/19 TR TC TY TV TL TD
PTA +1613M +88F +54P 99R 8/19
PTA +7.4PL 2.90SCS +0.4DPR 4.2%DCE
PTA +2.12T +2.82UDC +1.48FLC 99R 8/19
GTPI +2698G

Ms Apples MC Valentine-ET

71259307 Excellent-90 EX-MS RC TL TD
4-10 2x 334d 29600 4.8 1410 3.7 1102
2-03 2x 365d 28250 4.5 1264 3.5 976
3-09 2x 338d 27710 4.4 1213 3.4 952

3rd Dam

Kamps-Hollow Altitude-ET EX-95 2E DOM RC
7-00 2x 365d 39690 4.7 1849 3.5 1385
Life: 1844d 144460 4.4 6295 3.7 5288

4th Dam

Clover-Mist Alisha-ET EX-93 3E DOM
8-07 2x 365d 36920 4.2 1553 3.4 1258
Life: 2999d 226470 4.7 10659 3.6 8149

De-Su Bkm McCutchen 1174-ET

69990138 Excellent-93 GM 8/15 TR TP TC TY TV TL
PTA +807M +50F +30P 99R 8/19
PTA +3.08T +2.43UDC +1.93FLC GTPI +2248G

KHW Regiment Apple-Red-ET

135511521 Excellent-96 EEEEE 4E DOM CV
9-01 2x 365d 36750 4.3 1582 3.5 1280
4-01 2x 365d 35754 4.1 1682 3.7 1314
Life: 2898d 240640 4.7 11394 3.7 9013

• *Unanimous All-American 2006, 2011, 2013*

5

KENMORE MW AMBROSIA-RED-ET

3137164796 TV TL TD 99%RHA-I
Born: January 29, 2017
GTPI +2452G 8/19

Fresh: June 1, 2019
Milking 60 lbs/day SCC 17

Mr DDS Mega-Watt-ET

3010365126 RC TC TY TV TL TD
PTA +593M +15F +33P 90R 8/19
PTA +6.4PL 2.55SCS +2.9DPR 4.1%DCE
PTA +1.16T +1.29UDC +.40FLC 85R 8/19
GTPI +2273G

Ri-Val-Re Lil Apple-ETS

3126003444 Good Plus-84 VG-MS @ 3-04
GTPI +2513G +2.77T +2.99UDC 8/19
Sells as Lot 4

3rd Dam

KHW Regiment Apple-Red-ET EX-96 4E DOM
9-01 2x 365d 36750 4.3 1582 3.5 1280
Life: 2898d 240640 4.7 11394 3.7 9013

• *Unanimous All-American 2006, 2011, 2013*

4th Dam

Kamps-Hollow Altitude-ET EX-95 2E DOM RC
7-00 2x 365d 39690 4.7 1849 3.5 1385
Life: 1844d 144460 4.4 6295 3.7 5288

Mr Mogul Delta 1427-ET

72128216 GM 8/19 TR TC TY TV TL TD
PTA +1613M +88F +54P 99R 8/19
PTA +2.12T +2.82UDC +1.48FLC GTPI +2698G

Ms Apples MC Valentine-ET

71259307 Excellent-90 EX-MS RC TL TD
4-10 2x 334d 29600 4.8 1410 3.7 1102
2-03 2x 365d 28250 4.5 1264 3.5 976
3-09 2x 338d 27710 4.4 1213 3.4 952

6

KENMORE MW AWESOME-ET

3143029839 RC TL TD 99%RHA-I
Born: January 30, 2017
GTPI +2430G 8/19

Fresh: June 1, 2019
Milking 70 lbs/day SCC 27

Bred: July 19, 2019 to Kenmore Doc Holliday-ET
314771017 GTPI +2660G 8/19 +1633M +3.56T

Mr DDS Mega-Watt-ET

3010365126 RC TC TY TV TL TD
PTA +593M +15F +33P 90R 8/19
PTA +6.4PL 2.55SCS +2.9DPR 4.1%DCE
PTA +1.16T +1.29UDC +.40FLC 85R 8/19
GTPI +2273G

Ri-Val-Re Lil Apple-ETS

3126003444 Good Plus-84 VG-MS @ 3-04
GTPI +2513G +2.77T +2.99UDC 8/19
Sells as Lot 4

3rd Dam

KHW Regiment Apple-Red-ET EX-96 4E DOM
9-01 2x 365d 36750 4.3 1582 3.5 1280
Life: 2898d 240640 4.7 11394 3.7 9013

• *Unanimous All-American 2006, 2011, 2013*

4th Dam

Kamps-Hollow Altitude-ET EX-95 2E DOM RC
7-00 2x 365d 39690 4.7 1849 3.5 1385
Life: 1844d 144460 4.4 6295 3.7 5288

Mr Mogul Delta 1427-ET

72128216 GM 8/19 TR TC TY TV TL TD
PTA +1613M +88F +54P 99R 8/19
PTA +2.12T +2.82UDC +1.48FLC GTPI +2698G

Ms Apples MC Valentine-ET

71259307 Excellent-90 EX-MS RC TL TD
4-10 2x 334d 29600 4.8 1410 3.7 1102
2-03 2x 365d 28250 4.5 1264 3.5 976
3-09 2x 338d 27710 4.4 1213 3.4 952

7

KENMORE SKYSCRAPER-ET

3147771069 99%RHA-I
 Born: August 12, 2018
 GTPI +2760G
 PTA +1034M +86F +59P 76R 8/19
 PTA +941NM +1.7%F +.10%P
 PTA +6.5PL 2.88SCS +1.5DPR 2.3%DCE
 PTA +1.69T +2.74UDC +1.42FLC 74R 8/19
 PTA +223FE +1.5FI 5.6%SCE

Sells open & ready to flush

Bomaz Skywalker-ET

3137878481 TR TC TY TV TL TD
 PTA +1532M +71F +73P 80R 8/19
 PTA +6.5PL 2.88SCS +2.4DPR 1.5%DCE
 PTA +1.40T +1.84UDC .71FLC 77R 8/19
 GTPI +2737G

Ri-Val-Re Lil Apple-ETS

3126003444 Good Plus-84 VG-MS @ 3-04
 GTPI +2513G +2.77T +2.99UDC 8/19
Sells as Lot 4

3rd Dam

KHW Regiment Apple-Red-ET EX-96 4E DOM
 9-01 2x 365d 36750 4.3 1582 3.5 1280
 Life: 2898d 240640 4.7 11394 3.7 9013
 • *Unanimous All-American 2006, 2011, 2013*

4th Dam

Kamps-Hollow Altitude-ET EX-95 2E DOM RC
 7-00 2x 365d 39690 4.7 1849 3.5 1385
 Life: 1844d 144460 4.4 6295 3.7 5288

Mr Mogul Delta 1427-ET

72128216 GM 8/19 TR TC TY TV TL TD
 PTA +1613M +88F +54P 99R 8/19
 PTA +2.12T +2.82UDC +1.48FLC GTPI +2698G

Ms Apples MC Valentine-ET

71259307 Excellent-90 EX-MS RC TL TD
 4-10 2x 334d 29600 4.8 1410 3.7 1102
 2-03 2x 365d 28250 4.5 1264 3.5 976
 3-09 2x 338d 27710 4.4 1213 3.4 952

8

KENMORE SKY ADRIANNA-ET

3147771066 99%RHA-I
 Born: August 12, 2018
 GTPI +2704G
 PTA +972M +74F +57P 76R 8/19
 PTA +893NM +.14%F +.10%P
 PTA +7.2PL 2.93SCS +1.4DPR 2.1%DCE
 PTA +1.85T +2.30UDC +1.64FLC 74R 8/19
 PTA +196FE +1.7FI 4.7%SCE

Sells open & ready to flush

Bomaz Skywalker-ET

3137878481 TR TC TY TV TL TD
 PTA +1532M +71F +73P 80R 8/19
 PTA +6.5PL 2.88SCS +2.4DPR 1.5%DCE
 PTA +1.40T +1.84UDC .71FLC 77R 8/19
 GTPI +2737G

Ri-Val-Re Lil Apple-ETS

3126003444 Good Plus-84 VG-MS @ 3-04
 GTPI +2513G +2.77T +2.99UDC 8/19
Sells as Lot 4

3rd Dam

KHW Regiment Apple-Red-ET EX-96 4E DOM
 9-01 2x 365d 36750 4.3 1582 3.5 1280
 Life: 2898d 240640 4.7 11394 3.7 9013
 • *Unanimous All-American 2006, 2011, 2013*

4th Dam

Kamps-Hollow Altitude-ET EX-95 2E DOM RC
 7-00 2x 365d 39690 4.7 1849 3.5 1385
 Life: 1844d 144460 4.4 6295 3.7 5288

Mr Mogul Delta 1427-ET

72128216 GM 8/19 TR TC TY TV TL TD
 PTA +1613M +88F +54P 99R 8/19
 PTA +2.12T +2.82UDC +1.48FLC GTPI +2698G

Ms Apples MC Valentine-ET

71259307 Excellent-90 EX-MS RC TL TD
 4-10 2x 334d 29600 4.8 1410 3.7 1102
 2-03 2x 365d 28250 4.5 1264 3.5 976
 3-09 2x 338d 27710 4.4 1213 3.4 952

9

KENMORE KR GOLDMINE-ET

3143029873 RC TC TL TD 99%RHA-I
 Born: July 5, 2017
 GTPI +2540G +3.05T +3.20UDC +2.03FLC 8/19
 Fresh: July 25, 2019

Plain-Knoll King Royal-ET

74564764 Very Good-86 TR TP TC TY TV TL TD
 PTA +983M +75F +50P 93R 8/19
 PTA +2.7PL 2.92SCS -0.5DPR 4.6%DCE
 PTA +2.14T +2.95UDC +1.90FLC 88R 8/19
 GTPI +2581G

Ri-Val-Re Lil Apple-ETS

3126003444 Good Plus-84 VG-MS @ 3-04
 GTPI +2513G +2.77T +2.99UDC 8/19
Sells as Lot 4

3rd Dam

KHW Regiment Apple-Red-ET EX-96 4E DOM
 9-01 2x 365d 36750 4.3 1582 3.5 1280
 Life: 2898d 240640 4.7 11394 3.7 9013
 • *Unanimous All-American 2006, 2011, 2013*

4th Dam

Kamps-Hollow Altitude-ET EX-95 2E DOM RC
 7-00 2x 365d 39690 4.7 1849 3.5 1385
 Life: 1844d 144460 4.4 6295 3.7 5288

Mr Mogul Delta 1427-ET

72128216 GM 8/19 TR TC TY TV TL TD
 PTA +1613M +88F +54P 99R 8/19
 PTA +2.12T +2.82UDC +1.48FLC GTPI +2698G

Ms Apples MC Valentine-ET

71259307 Excellent-90 EX-MS RC TL TD
 4-10 2x 334d 29600 4.8 1410 3.7 1102
 2-03 2x 365d 28250 4.5 1264 3.5 976
 3-09 2x 338d 27710 4.4 1213 3.4 952

10

KENMORE APPRENTICE ALEXA-ET

3143029861 RC TL TD 99%RHA-I

Born: May 18, 2017

GTPI +2454G +3.23UDC 8/19

Fresh: September 24, 2019

Endco Apprentice-ET

3129037908 RC CD TP TY TV TL TD

PTA +1507M +65F +53P 93R 8/19

PTA +6.3PL 2.60SCS +1.4DPR 3.9%DCE

PTA +1.96T +2.17UDC +1.34FLC 85R 8/19

GTPI +2630G

Ri-Val-Re Lil Apple-ETS

3126003444 Good Plus-84 VG-MS @ 3-04

GTPI +2513G +2.77T +2.99UDC 8/19

*Sells as Lot 4**3rd Dam***KHW Regiment Apple-Red-ET** EX-96 4E DOM

9-01 2x 365d 36750 4.3 1582 3.5 1280

Life: 2898d 240640 4.7 11394 3.7 9013

• *Unanimous All-American 2006, 2011, 2013**4th Dam***Kamps-Hollow Altitude-ET** EX-95 2E DOM RC

7-00 2x 365d 39690 4.7 1849 3.5 1385

Life: 1844d 144460 4.4 6295 3.7 5288

Mr Mogul Delta 1427-ET

72128216 GM 8/19 TR TC TY TV TL TD

PTA +1613M +88F +54P 99R 8/19

PTA +2.12T +2.82UDC +1.48FLC GTPI +2698G

Ms Apples MC Valentine-ET

71259307 Excellent-90 EX-MS RC TL TD

4-10 2x 334d 29600 4.8 1410 3.7 1102

2-03 2x 365d 28250 4.5 1264 3.5 976

3-09 2x 338d 27710 4.4 1213 3.4 952

11

KENMORE APPRENTICE ADDY-ET

3143029862 RC CD TL TD 99%RHA-I

Born: May 18, 2017

GTPI +2604G +1639M +2.77T +2.73UDC 8/19

Due sale time to Kenmore Doc Holloday-ET

314771017 GTPI +2660G 8/19 +1633M +3.56T

Endco Apprentice-ET

3129037908 RC CD TP TY TV TL TD

PTA +1507M +65F +53P 93R 8/19

PTA +6.3PL 2.60SCS +1.4DPR 3.9%DCE

PTA +1.96T +2.17UDC +1.34FLC 85R 8/19

GTPI +2630G

Ri-Val-Re Lil Apple-ETS

3126003444 Good Plus-84 VG-MS @ 3-04

GTPI +2513G +2.77T +2.99UDC 8/19

*Sells as Lot 4**3rd Dam***KHW Regiment Apple-Red-ET** EX-96 4E DOM

9-01 2x 365d 36750 4.3 1582 3.5 1280

Life: 2898d 240640 4.7 11394 3.7 9013

• *Unanimous All-American 2006, 2011, 2013**4th Dam***Kamps-Hollow Altitude-ET** EX-95 2E DOM RC

7-00 2x 365d 39690 4.7 1849 3.5 1385

Life: 1844d 144460 4.4 6295 3.7 5288

Mr Mogul Delta 1427-ET

72128216 GM 8/19 TR TC TY TV TL TD

PTA +1613M +88F +54P 99R 8/19

PTA +2.12T +2.82UDC +1.48FLC GTPI +2698G

Ms Apples MC Valentine-ET

71259307 Excellent-90 EX-MS RC TL TD

4-10 2x 334d 29600 4.8 1410 3.7 1102

2-03 2x 365d 28250 4.5 1264 3.5 976

3-09 2x 338d 27710 4.4 1213 3.4 952

12

KENMORE SWEET 16-ET

314302847 TR TL TD 99%RHA-I

Born: March 22, 2017

GTPI +2503G +2.79T +3.35UDC 8/19

Fresh: June 1, 2019

Milking 66 lbs/day SCC 429

Bred: Sept. 22, 2019 to Mr Frazzled Aristocrat-ET

551H03701 GTPI +2800G +1605M +2.67T

Wa-Del Yoder Bandares-ET

143189741 TR TP TC TY TV TL TD

PTA -208M +38F +21P 99R 8/19

PTA +6.6PL 2.71SCS +1.1DPR 4.0%DCE

PTA +1.85T +2.77UDC +1.29FLC 96R 8/19

GTPI +2396G

Ri-Val-Re Lil Apple-ETS

3126003444 Good Plus-84 VG-MS @ 3-04

GTPI +2513G +2.77T +2.99UDC 8/19

*Sells as Lot 4**3rd Dam***KHW Regiment Apple-Red-ET** EX-96 4E DOM

9-01 2x 365d 36750 4.3 1582 3.5 1280

Life: 2898d 240640 4.7 11394 3.7 9013

• *Unanimous All-American 2006, 2011, 2013**4th Dam***Kamps-Hollow Altitude-ET** EX-95 2E DOM RC

7-00 2x 365d 39690 4.7 1849 3.5 1385

Life: 1844d 144460 4.4 6295 3.7 5288

Mr Mogul Delta 1427-ET

72128216 GM 8/19 TR TC TY TV TL TD

PTA +1613M +88F +54P 99R 8/19

PTA +2.12T +2.82UDC +1.48FLC GTPI +2698G

Ms Apples MC Valentine-ET

71259307 Excellent-90 EX-MS RC TL TD

4-10 2x 334d 29600 4.8 1410 3.7 1102

2-03 2x 365d 28250 4.5 1264 3.5 976

3-09 2x 338d 27710 4.4 1213 3.4 952

13

KENMORE ELITE 8-ET

3143029848 TR TL TD 99%RHA-I
Born: March 22, 2017
GTPI +2392G +3.11UDC 8/19

Fresh: July 8, 2019
Milking 62 lbs/day SCC 174

Wa-Del Yoder Bandares-ET

143189741 TR TP TC TY TV TL TD
PTA -208M +38F +21P 99R 8/19
PTA +6.6PL 2.71SCS +1.1DPR 4.0%DCE
PTA +1.85T +2.77UDC +1.29FLC 96R 81/9
GTPI +2396G

Ri-Val-Re Lil Apple-ETS

3126003444 Good Plus-84 VG-MS @ 3-04
GTPI +2513G +2.77T +2.99UDC 8/19
Sells as Lot 4

3rd Dam

KHW Regiment Apple-Red-ET EX-96 4E DOM
9-01 2x 365d 36750 4.3 1582 3.5 1280
Life: 2898d 240640 4.7 11394 3.7 9013
• *Unanimous All-American 2006, 2011, 2013*

4th Dam

Kamps-Hollow Altitude-ET EX-95 2E DOM RC
7-00 2x 365d 39690 4.7 1849 3.5 1385
Life: 1844d 144460 4.4 6295 3.7 5288

Mr Mogul Delta 1427-ET

72128216 GM 8/19 TR TC TY TV TL TD
PTA +1613M +88F +54P 99R 8/19
PTA +2.12T +2.82UDC +1.48FLC GTPI +2698G

Ms Apples MC Valentine-ET

71259307 Excellent-90 EX-MS RC TL TD
4-10 2x 334d 29600 4.8 1410 3.7 1102
2-03 2x 365d 28250 4.5 1264 3.5 976
3-09 2x 338d 27710 4.4 1213 3.4 952

14

KENMORE CINDERELLA-ET

3143029850 RC TL TD 99%RHA-I
Born: March 22, 2017
GTPI +2453G +2.69T +2.95UDC +2.13FLC 8/19

Fresh: September 1, 2019
Milking 68 lbs/day SCC 115

Wa-Del Yoder Bandares-ET

143189741 TR TP TC TY TV TL TD
PTA -208M +38F +21P 99R 8/19
PTA +6.6PL 2.71SCS +1.1DPR 4.0%DCE
PTA +1.85T +2.77UDC +1.29FLC 96R 81/9
GTPI +2396G

Ri-Val-Re Lil Apple-ETS

3126003444 Good Plus-84 VG-MS @ 3-04
GTPI +2513G +2.77T +2.99UDC 8/19
Sells as Lot 4

3rd Dam

KHW Regiment Apple-Red-ET EX-96 4E DOM
9-01 2x 365d 36750 4.3 1582 3.5 1280
Life: 2898d 240640 4.7 11394 3.7 9013
• *Unanimous All-American 2006, 2011, 2013*

4th Dam

Kamps-Hollow Altitude-ET EX-95 2E DOM RC
7-00 2x 365d 39690 4.7 1849 3.5 1385
Life: 1844d 144460 4.4 6295 3.7 5288

Mr Mogul Delta 1427-ET

72128216 GM 8/19 TR TC TY TV TL TD
PTA +1613M +88F +54P 99R 8/19
PTA +2.12T +2.82UDC +1.48FLC GTPI +2698G

Ms Apples MC Valentine-ET

71259307 Excellent-90 EX-MS RC TL TD
4-10 2x 334d 29600 4.8 1410 3.7 1102
2-03 2x 365d 28250 4.5 1264 3.5 976
3-09 2x 338d 27710 4.4 1213 3.4 952

15

BOSSIDE REDSTAR 9616-RED-ET

78378170
Born: January 5, 2016

Fresh: July 13, 2019
Milking 64 lbs/day SCC 47

Bred: Aug. 27, 2019 to Kenmore Doc Holliday-ET
314771017 GTPI +2660G 8/19 +1633M +3.56T

Brunner Redstar P-Red

CAN 107617462 PC TY TV TL TD
PTA -877M +11F +4P 91R 8/19
PTA +3.5PL 2.79SCS +0.3DPR 6.8%DCE
PTA +1.50T +1.39UDC +1.07FLC 86R 81/9
GTPI +1934G

Ms Apples Alanna-ET

69822263 Very Good-88 VEVVV @ 3-05 RC CV
2-06 2x 365d 26430 4.6 1206 3.5 937

3rd Dam

Kamps-Hollow Altitude-ET EX-95 2E DOM RC
7-00 2x 365d 39690 4.7 1849 3.5 1385
Life: 1844d 144460 4.4 6295 3.7 5288

4th Dam

Clover-Mist Alisha-ET EX-93 3E DOM
8-07 2x 365d 36920 4.2 1553 3.4 1258
Life: 2999d 226470 4.7 10659 3.6 8149

Braedale Goldwyn

CAN 10705608 GP-CAN GM 12/11 TV TL
PTA -290M +14F +3P 99R 8/19
PTA +1.71T +1.45UDC +1.34FLC GTPI +1860G

KHW Regiment Apple-Red-ET

135511521 Excellent-96 EEEEE 4E DOM CV
9-01 2x 365d 36750 4.3 1582 3.5 1280
4-01 2x 365d 35754 4.1 1682 3.7 1314
Life: 2898d 240640 4.7 11394 3.7 9013
• *Unanimous All-American 2006, 2011, 2013*



MISS SHOTTLE SADIE-ET EX-93 EEEEE 2E
2ND DAM OF LOT 16

16

MISS SHAN DETOX

72371345 Very Good-88 EX-MS TL TD 99%RHA-I
Born: August 31, 2013
GTPI +2056G 8/19

Milking 106 lbs/day SCC 93

Bred June 18, 2019 to Kenmore Doc Holliday-ET
314771017 GTPI +2660G 8/19 +1633M +3.56T

Long-Langs Oman Oman-ET

135746776 Very Good-85 GM 12/13 TV TL TY TD
PTA +455M +37F +41P 99R 8/19
PTA +.31T +.42UDC -.65FLC GTPI +2010G

Ladys-Manor PL Shandra-ET

66676321 Excellent-90 EX-MS DOM
4-11 3x 305d 41590 3.1 1291 2.9 1193
Life: 1902d 206260 3.1 6312 3.0 6100

Ronelee Toystory Domain-ET

137974489 Excellent-90 GM 12/12 TY TV TL TD
PTA +808M -2F +16P 99R 8/19
PTA +1.18T +.96UDC -.04FLC GTPI +1837G

Miss Shottle Sadie-ET

139843680 Excellent-93 EEEEE 2E
3-02 3x 365d 37490 4.3 1599 3.1 1146
4-02 3x 365d 36960 4.0 1484 3.3 1207
7-01 3x 365d 34810 3.9 1356 3.3 1135
1-11 2x 356d 31800 4.4 1387 3.2 1021
Life: 1770d 164780 4.1 6761 3.2 5290

Ladys-Manor Man-O-Shan-ET

70528492 Excellent-90 TY TV TL TD
PTA +987M +51F +34P 99R 8/19
PTA +2.9PL 3.03UDC -0.9DPR 4.2%DCE
PTA +1.52T +2.21UDC +.18FLC 99R 8/19
GTPI +2204G

Miss Domain Della-ET

140988686 Very Good-87 VG-MS @ 4-10
3-08 2x 365d 29540 3.7 1087 3.0 894
2-09 2x 301d 27730 3.6 1001 3.2 875

3rd Dam

Wysslawm Ramos Reba EX-91 EEEVE
4-10 2x 365d 33700 4.0 1361 3.1 1053

4th Dam

Golden-Oaks Rolex Jinnie-ET EX-90 VEEEE
4-06 3x 365d 38980 3.5 1356 3.1 1214

5th Dam

O-Bee Aaron Jinnie-ET EX-91 2E GMD DOM
5-07 2x 359d 39200 3.7 1468 3.6 1406

6th Dam

Meier-Meadows El Jezebel-ET EX-92 GMD DOM
4-02 2x 365d 35082 4.4 1539 3.5 1077

7th Dam

Meier-Meadows Melwood Jacki VG-87 DOM
2-11 2x 365d 27860 3.7 1031 3.1 868

8th Dam

Clearfield Mark Jakoba G-77
2-00 2x 356d 22860 3.4 787 2.8 651

9th Dam

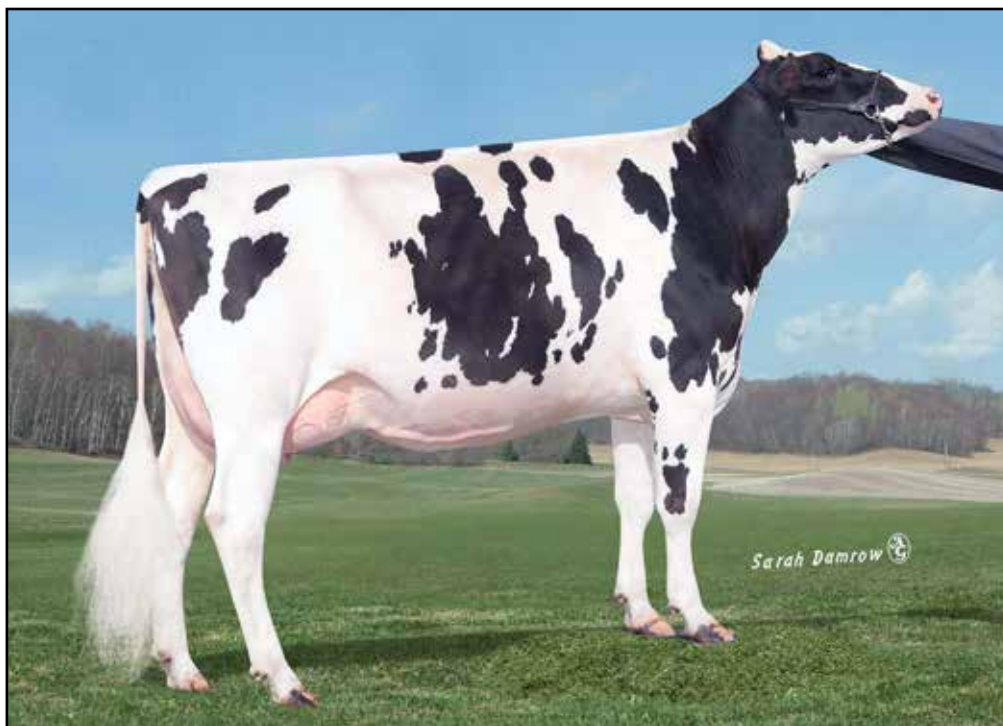
Clearfield Bova Janette VG-88 DOM
6-00 2x 365d 36440 3.1 1131 2.6 956
Life: 3310d 247690 3.1 7790 2.7 5915

10th Dam

Clearfield Cinnamon Jan VG-85
7-10 2x 321d 22890 3.3 751
Life: 2081d 135600 3.1 4189

11th Dam

Janalee Clearfield Admiral VG-87 VVEV GMD
Life: 2982d 140710 3.8 5301



NOVA SHOTTLE EVELYN-ET VG-87 DOM
2ND DAM OF LOT 17

17

MILLER-FF HEADLINER ELSA

144175604 99%RHA-NA
Born: April 15, 2017

Fresh: May 19, 2019
Milking 68 lbs/day SCC 107

Bred Sept. 25, 2019 to Kenmore Doc Holliday-ET
314771017 GTPI +2660G 8/19 +1633M +3.56T

Roylane Socra Robust-ET

64966739 Very Good-88 GM 8/15 TR TV TL TD
PTA +925M +69F +42P 99R 8/19
PTA +.58T +1.15UDC +1.45FLC GTPI +2434G

Ammon-Peachey Shauna-ET

66228178 Excellent-92 EEEEE 2E GMD DOM
6-01 3x 365d 40290 3.7 1479 3.2 1309
Life: 1336d 136050 4.1 5543 3.3 4552

View-Home Monterey-ET

69087180 TC TV TL TY TD
PTA +640M +49F +37P 99R 8/19
PTA +3.20T +2.90UDC +1.76FLC GTPI +2472G

Nova Shottle Evelyn-ET

66452835 Very Good-87 VVVVV DOM
2-00 2x 365d 34290 4.6 1566 3.7 1265

Seagull-Bay Headliner-ET

69981350 Very Good-87 GM 8/15 TR TP TY TV TL TD
PTA +1709M +71F +61P 99R 8/19
PTA +0.3PL 3.15SCS -2.1DPR 5.8%DCE
PTA +2.24T +1.57UDC +1.70FLC 99R 8/189
GTPI +2334G

Miller-FF Monterey Expo

3127031401 Excellent-90 VVEEE @ 3-07 TL TD
GTPI +2375G 8/19
3-00 3x 305d 30390 5.6 1728 3.6 1118
1-09 3x 305d 26470 5.0 1324 3.5 918

3rd Dam

Nova-TMJ Golden Edie-ETS VG-87 VVVVV DOM
2-04 2x 365d 30230 4.8 1445 3.4 1037

4th Dam

UFM-Dubs Eroy VG-87 GMD DOM *TV
4-06 2x 365d 40330 4.4 1789 3.1 1239
Life: 1589d 129380 4.4 5738 3.3 4298

5th Dam

UFM-Dubs Sam Erin EX-90 2E GMD DOM *TV
4-02 2x 365d 39450 4.1 1631 3.1 1219
Life: 1282d 106440 4.3 4526 3.2 3424

6th Dam

UFM-Dubs Patron Ellen EX-90 EEEEE
2-11 2x 365d 26330 4.2 1106 3.3 878
Life: 1582d 110460 4.1 4559 3.3 3604

7th Dam

UFM Antci Bell VG-87 VEVVV
4-00 2x 365d 29120 3.6 1060 3.2 928
Life: 1744d 122410 3.8 4647 3.2 3901

8th Dam

UFM Jax Antci VG-85 GMD DOM
4-01 2x 305d 27360 3.7 1012 3.0 832
Life: 1839d 138700 3.8 5237 3.0 4164



OUR-FAVORITE SHNAZZY RAE-ET VG-88 *RC
DAM OF LOTS 18, 19 & 20

18

KENMORE OLYMPIANA

56629687 Good Plus-83 @ 4-02
Born: June 15, 2014

Fresh: March 15, 2019
Milking 60 lbs/day

Bred: Sept. 23, 2019 to Kenmore Doc Holliday-ET
314771017 GTPI +2660G 8/19 +1633M +3.56T

Hunsberger Alchemy-ET

69080973 RC TY TV TL TD
PTA +403M +5F +23P 99R 8/19
PTA +1.12T +1.57UDC -.94FLC GTPI +2055G

Ladys-Manor Dorcy Oda

69547657 Excellent-93 EEEEE 2E DOM
6-02 2x 365d 36710 4.6 1687 3.0 1093
2-00 2x 365d 31930 4.1 1319 3.1 994

Picston Shottle-ET

GBR 598172 EX-95-GBR GM 8/10 TV TL
PTA +492M +26F +11P 99R 8/19
PTA +1.11T +.65UDC +.32FLC GTPI +1878G

Scientific Gold Dish Rae-ET

138106951 Excellent-90 EEEEEV DOM RC TV TL
6-10 3x 365d 44700 3.8 1717 3.0 1363
2-05 3x 365d 35210 4.1 1427 3.4 1187
Life: 1145d 110650 4.1 4586 3.4 3742

Ladys-Manor Olympian

71592946 RC TP TY TV TL TD
PTA +599M -13F +26P 99R 8/19
PTA +6.1PL 2.43SCS +3.4DPR 6.2%DCE
PTA +1.29T +2.61UDC -.13FLC 99R 8/19
GTPI +2192G

Our-Favorite Shnazzzy Rae-ET

139920383 Very Good-88 VG-MS @ 4-02 RC
3-07 2x 365d 30669 3.4 1066 3.1 963
2-00 2x 365d 29938 3.3 993 3.2 953
5-03 2x 305d 27770 3.7 1023 3.1 864

3rd Dam

Scientific Debutante Rae-ET EX-92 GMD DOM *RC
2-02 2x 365d 32930 4.4 1440 3.4 1132

• All-American 4-Yr-Old Cow 2005

4th Dam

Scientific Jubilant Rae-ET EX-90 DOM *RC
5-11 2x 365d 38880 4.1 1608 3.6 1403
Life: 1394d 117590 4.0 4707 3.6 4242

5th Dam

C Hanoverhill Tony Rae EX-96 3E GMD DOM
6-11 2x 365d 40220 4.1 1661 3.3 1331
Life: 2247d 166396 4.1 6904 3.4 5612

6th Dam

C Hanoverhill TT Roxette-ET EX-94 2E GMD
10-0 3x 365d 35040 4.3 1519 3.0 1063
Life: 2104d 164789 4.1 6760 3.1 3587

7th thru 10th Dams

Mil-R-Mor Roxette EX-90 EEEV GMD DOM 30*
7-01 2x 365d 24530 4.7 1153
Life: 2150d 121417 4.7 5725

C Glenridge Citation Roxy EX-97 4E GMD 6*
Life: 3620d 209784 4.5 9471

"Queen of the Breed"

C Norton Court Model Vee EX-90 6*
Life: 4183d 218629 3.9 8581

• All-American Produce of Dam 1977 - 1979

Norton Court Reflection Val VG-85 *5 STAR
Life: 14 Lact 249583 3.7 9295

19

KENMORE ADIRONDACK-RED

3133791594 Good Plus-82 @ 3-00
Born: August 14, 2015

Fresh: February 25, 2019
Milking 60 lbs/day

Bred: June 9, 2019 to Kenmore Doc Holliday-ET
314771017 GTPI +2660G 8/19 +1633M +3.56T

Mr Apples Armani-ET

68571374 Excellent-90 RC CD TP TY TV TL TD
PTA -1413M +32F -2P 99R 8/19
PTA -0.8PL 2.75SCS +1.6DPR 5.2%DCE
PTA +1.70T +2.57UDC +2.05FLC 99R 8/19
GTPI +2083G

Our-Favorite Shnazy Rae-ET

139920383 Very Good-88 VG-MS @ 4-02 RC
3-07 2x 365d 30669 3.4 1066 3.1 963
2-00 2x 365d 29938 3.3 993 3.2 953
5-03 2x 305d 27770 3.7 1023 3.1 864

3rd Dam

Scientific Debutante Rae-ET EX-92 GMD DOM RC
2-02 2x 365d 32930 4.4 1440 3.4 1132
• All-American 4-Yr-Old Cow 2005

4th Dam

Scientific Jubilant Rae-ET EX-90 DOM RC
5-11 2x 365d 38880 4.1 1608 3.6 1403
Life: 1394d 117590 4.0 4707 3.6 4242

Picston Shottle-ET

GBR 598172 EX-95-GBR GM 8/10 *TV *TL
PTA +492M +26F +11P 99R 8/19
PTA +1.11T +.65UDC +.32FLC GTPI +1878G

Scientific Gold Dish Rae-ET

138106951 Excellent-90 EEEEE DOM RC TV TL
6-10 3x 365d 44700 3.8 1717 3.0 1363
2-05 3x 365d 35210 4.1 1427 3.4 1187
Life: 1145d 110650 4.1 4586 3.4 3742

20

KENMORE APPLE RAE-RED-ET

56629681 Good Plus-80 @ 4-03
Born: May 6, 2014
GTPI +1982G 8/19

Fresh: July 4, 2019
Milking 76 lbs/day

Bred: Sept. 1, 2019 to Kenmore Doc Holliday-ET
314771017 GTPI +2660G 8/19 +1633M +3.56T

Mr Apples Armani-ET

68571374 Excellent-90 RC CD TP TY TV TL TD
PTA -1413M +32F -2P 99R 8/19
PTA -0.8PL 2.75SCS +1.6DPR 5.2%DCE
PTA +1.70T +2.57UDC +2.05FLC 99R 8/19
GTPI +2083G

Our-Favorite Shnazy Rae-ET

139920383 Very Good-88 VG-MS @ 4-02 RC
3-07 2x 365d 30669 3.4 1066 3.1 963
2-00 2x 365d 29938 3.3 993 3.2 953
5-03 2x 305d 27770 3.7 1023 3.1 864

3rd Dam

Scientific Debutante Rae-ET EX-92 GMD DOM RC
2-02 2x 365d 32930 4.4 1440 3.4 1132
• All-American 4-Yr-Old Cow 2005

4th Dam

Scientific Jubilant Rae-ET EX-90 DOM RC
5-11 2x 365d 38880 4.1 1608 3.6 1403
Life: 1394d 117590 4.0 4707 3.6 4242

Picston Shottle-ET

GBR 598172 EX-95-GBR GM 8/10 *TV *TL
PTA +492M +26F +11P 99R 8/19
PTA +1.11T +.65UDC +.32FLC GTPI +1878G

Scientific Gold Dish Rae-ET

138106951 Excellent-90 EEEEE DOM RC TV TL
6-10 3x 365d 44700 3.8 1717 3.0 1363
2-05 3x 365d 35210 4.1 1427 3.4 1187
Life: 1145d 110650 4.1 4586 3.4 3742

21

KENMORE HT ASTRO

3137164776 RC
Born: July 2, 2016

Fresh: November 30, 2018
Milking 56 lbs/day SCC 141

Bred: May 11, 2019 to Kenmore Triple Crown-Red-ET
3143029863

Cookiecutter Hang-Time-ET

3013614200 Very Good-87 TR TP TY TV TL TD
PTA +836M +68F +46P 99R 8/19
PTA +3.7PL 3.13SCS +0.7DPR 3.9%DCE
PTA +2.42T +2.86UDC +.29FLC 96R 8/19
GTPI +2437G

Kenmore Apple Rae-Red-ET

56629681 Good Plus-80 @ 4-03
GTPI +1982G 8/19
Sells as Lot 20

3rd Dam

Scientific Gold Dish Rae-ET EX-90 DOM RC
6-10 3x 365d 44700 3.8 1717 3.0 1363
Life: 1145d 110650 4.1 4586 3.4 3742

4th Dam

Scientific Debutante Rae-ET EX-92 GMD DOM RC
2-02 2x 365d 32930 4.4 1440 3.4 1132
• All-American 4-Yr-Old Cow 2005

Mr Apples Armani-ET

68571374 Excellent-90 RC CD TP TY TV TL TD
PTA -1413M +32F -2P 99R 8/19
PTA +1.70T +2.57UDC +2.05FLC GTPI +2083G

Our-Favorite Shnazy Rae-ET

139920383 Very Good-88 VG-MS @ 4-02 RC
3-07 2x 365d 30669 3.4 1066 3.1 963
2-00 2x 365d 29938 3.3 993 3.2 953
5-03 2x 305d 27770 3.7 1023 3.1 864



KENMORE SNAZZY RAE-RED-ET EX-90 2E
DAM OF LOT 23

22

KENMORE MONTROSS ARMOR

3143029875 RC
Born: July 10, 2017

Fresh: June 9, 2019
Milking 58 lbs/day SCC 132

Bacon-Hill Montross-ET

71703339 Excellent-92 GM 8/18 TR TP TC TY TV TL
PTA +2571M +67F +75P 99R 8/19
PTA +3.7PL 3.11SCS -0.9DPR 4.7%DCE
PTA +1.71T +2.22UDC +.96FLC 99R 8/19
GTPI +2460G

Kenmore Apple Rae-Red-ET

56629681 Good Plus-80 @ 4-03
GTPI +1982G 8/19
Sells as Lot 20

3rd Dam

Scientific Gold Dish Rae-ET EX-90 DOM RC
6-10 3x 365d 44700 3.8 1717 3.0 1363
Life: 1145d 110650 4.1 4586 3.4 3742

4th Dam

Scientific Debutante Rae-ET EX-92 GMD DOM RC
2-02 2x 365d 32930 4.4 1440 3.4 1132
• *All-American 4-Yr-Old Cow 2005*

Mr Apples Armani-ET

68571374 Excellent-90 RC CD TP TY TV TL TD
PTA -1413M +32F -2P 99R 8/19
PTA +1.70T +2.57UDC +2.05FLC GTPI +2083G

Our-Favorite Shnazzy Rae-ET

139920383 Very Good-88 VG-MS @ 4-02 RC
3-07 2x 365d 30669 3.4 1066 3.1 963
2-00 2x 365d 29938 3.3 993 3.2 953
5-03 2x 305d 27770 3.7 1023 3.1 864

23

KENMORE OLYMPIAN SALSA-ET

56629694 Good Plus-80 @ 2-04
Born: July 15, 2014
GTPI +2046G +2.39UDC 8/19

Fresh: May 1, 2019
Milking 80 lbs/day SCC 27

Bred: Sept. 4, 2019 to Kenmore Doc Holliday-ET
314771017 GTPI +2660G 8/19 +1633M +3.56T

Ladys-Manor Olympian

71592946 RC TP TY TV TL TD
PTA +599M -13F +26P 99R 8/19
PTA +6.1PL 2.43SCS +3.4DPR 6.2%DCE
PTA +1.29T +2.61UDC -.13FLC 99R 8/19
GTPI +2192G

Kenmore Snazzy Rae-Red-ET

141169826 Excellent-90 EEEEE 2E
4-09 2x 365d 33600 4.1 1364 3.3 1095
6-01 2x 305d 30730 3.7 1127 3.1 949
3-06 2x 305d 24460 3.8 936 3.2 792
2-03 2x 305d 23420 3.8 889 3.2 742

3rd Dam

Scientific Gold Dish Rae-ET EX-90 DOM RC
6-10 3x 365d 44700 3.8 1717 3.0 1363
Life: 1145d 110650 4.1 4586 3.4 3742

4th Dam

Scientific Debutante Rae-ET EX-92 GMD DOM RC
2-02 2x 365d 32930 4.4 1440 3.4 1132
• *All-American 4-Yr-Old Cow 2005*

Ronelee SS Durable

136747211 Excellent-90 GM 12/11 RC CD TY TV TL TD
PTA +344M +33F -1P 99R 8/19
PTA +.37T +.12UDC +1.60FLC GTPI +1812G

Our-Favorite Shnazzy Rae-ET

139920383 Very Good-88 VG-MS @ 4-02 RC
3-07 2x 365d 30669 3.4 1066 3.1 963
2-00 2x 365d 29938 3.3 993 3.2 953
5-03 2x 305d 27770 3.7 1023 3.1 864

24

KENMORE OLYMPIAN DEDE-ET

56629712

Born: January 16, 2015

GTPI +2202G +2.33UDC 8/19

Milking 62 lbs/day SCC 348

Bred: Aug. 15, 2019 to Kenmore Doc Holliday-ET
314771017 GTPI +2660G 8/19 +1633M +3.56T

Ladys-Manor Olympian

71592946 RC TP TY TV TL TD

PTA +599M -13F +26P 99R 8/19

PTA +6.1PL 2.43SCS +3.4DPR 6.2%DCE

PTA +1.29T +2.61UDC -.13FLC 99R 8/19

GTPI +2192G

Kenmore Mogul Dice Rae-ET

142226201 Good Plus-83 VG-MS @ 2-09 RC TL TD

3-08 2x 305d 14700 4.7 689 3.1 457

3rd Dam

Our-Favorite Shnazy Rae-ET VG-88 VG-MS RC

3-07 2x 365d 30669 3.4 1066 3.1 963

4th Dam

Scientific Gold Dish Rae-ET EX-90 DOM RC

6-10 3x 365d 44700 3.8 1717 3.0 1363

Life: 1145d 110650 4.1 4586 3.4 3742

Mountfield SSI Dcy Mogul-ET

3006972816 EX-93 GM 8/15 TR TP TC TY TL TD

PTA +1086M +71F +36P 99R 8/19

PTA +2.19T +3.13UDC +2.01FLC GTPI +2335G

Kenmore Snazzy Rae-Red-ET

141169826 Excellent-90 EEEEE 2E

4-09 2x 365d 33600 4.1 1364 3.3 1095

6-01 2x 305d 30730 3.7 1127 3.1 949

3-06 2x 305d 24460 3.8 936 3.2 792

25

KENMORE MIDNIGHT ONYX

3130321009 TL TD

Born: April 12, 2015

GTPI +2254G 8/19

Dry

Bred: Feb. 19, 2019 to Kenmore Triple Crown-Red-ET
3143029863 Ultrasound female

S-S-I Epic Midnight-ET

3009554689 Excellent-92 GM 12/17TR TP TY TV TL

PTA +1272M +57F +53P 99R 8/19

PTA +6.9PL 2.69DCD +2.0DPR 6.3%DCE

PTA +.68T +1.66UDC +.58FLC 97R 8/19

GTPI +2533G

Kenmore Mogul Dice Rae-ET

142226201 Good Plus-83 VG-MS @ 2-09 RC TL TD

3-08 2x 305d 14700 4.7 689 3.1 457

3rd Dam

Our-Favorite Shnazy Rae-ET VG-88 VG-MS RC

3-07 2x 365d 30669 3.4 1066 3.1 963

4th Dam

Scientific Gold Dish Rae-ET EX-90 DOM RC

6-10 3x 365d 44700 3.8 1717 3.0 1363

Life: 1145d 110650 4.1 4586 3.4 3742

Mountfield SSI Dcy Mogul-ET

3006972816 EX-93 GM 8/15 TR TP TC TY TL TD

PTA +1086M +71F +36P 99R 8/19

PTA +2.19T +3.13UDC +2.01FLC GTPI +2335G

Kenmore Snazzy Rae-Red-ET

141169826 Excellent-90 EEEEE 2E

4-09 2x 365d 33600 4.1 1364 3.3 1095

6-01 2x 305d 30730 3.7 1127 3.1 949

3-06 2x 305d 24460 3.8 936 3.2 792

26

KENMORE DOUBLE DICE-ET

56629721 Good Plus-83 VG-MS @ 2-04

Born: February 16, 2015

Fresh: June 1, 2019

Milking 72 lbs/day SCC 14

Bred: Sept. 25, 2019 to Farnear Altitude-Red-ET
551H03617 Sexed semen GTPI +3.79T +3.45UDC

Ladys-Manor Olympian

71592946 RC TP TY TV TL TD

PTA +599M -13F +26P 99R 8/19

PTA +6.1PL 2.43SCS +3.4DPR 6.2%DCE

PTA +1.29T +2.61UDC -.13FLC 99R 8/19

GTPI +2192G

Kenmore Mogul Dice Rae-ET

142226201 Good Plus-83 VG-MS @ 2-09 RC TL TD

3-08 2x 305d 14700 4.7 689 3.1 457

3rd Dam

Our-Favorite Shnazy Rae-ET VG-88 VG-MS RC

3-07 2x 365d 30669 3.4 1066 3.1 963

4th Dam

Scientific Gold Dish Rae-ET EX-90 DOM RC

6-10 3x 365d 44700 3.8 1717 3.0 1363

Life: 1145d 110650 4.1 4586 3.4 3742

Mountfield SSI Dcy Mogul-ET

3006972816 EX-93 GM 8/15 TR TP TC TY TL TD

PTA +1086M +71F +36P 99R 8/19

PTA +2.19T +3.13UDC +2.01FLC GTPI +2335G

Kenmore Snazzy Rae-Red-ET

141169826 Excellent-90 EEEEE 2E

4-09 2x 365d 33600 4.1 1364 3.3 1095

6-01 2x 305d 30730 3.7 1127 3.1 949

3-06 2x 305d 24460 3.8 936 3.2 792

27

KENMORE MLT DIVINE P-ET

56629714 Very Good-86 VG-MS @ 3-07 PO
Born: January 29, 2015
GTPI +2205G +2.20UDC 8/19

Dry

Due: Nov. 27, 2019 to Kenmore TripleCrown-Red-ET
3143029863

Kenmore Multitude P-ET

56629621 RC PC TY TV TL TD
PTA -708M +38F +0P 95R 8/19
PTA +2.9PL 2.74SCS 3.5DPR 4.5%DCE
PTA +1.15T +1.37UDC +.37FLC 88R 8/19
GTPI +2144G

Kenmore Mogul Delight-ET

142226229 Good Plus-82 @ 2-09 RC TL TD
3-05 3x 247d 20350 5.5 1118 3.7 762

3rd Dam

Our-Favorite Shnazy Rae-ET VG-88 VG-MS RC
3-07 2x 365d 30669 3.4 1066 3.1 963

4th Dam

Scientific Gold Dish Rae-ET EX-90 DOM RC
6-10 3x 365d 44700 3.8 1717 3.0 1363
Life: 1145d 110650 4.1 4586 3.4 3742

Mountfield SSI Dcy Mogul-ET

3006972816 EX-93 GM 8/15 TR TP TC TY TL TD
PTA +1086M +71F +36P 99R 8/19
PTA +2.19T +3.13UDC +2.01FLC GTPI +2335G

Kenmore Snazy Rae-Red-ET

141169826 Excellent-90 EEEEE 2E
4-09 2x 365d 33600 4.1 1364 3.3 1095
6-01 2x 305d 30730 3.7 1127 3.1 949
3-06 2x 305d 24460 3.8 936 3.2 792

28

KENMORE MLT DUCHESS-RED-ET

56629713 PO
Born: January 28, 2015
GTPI +2200G +2.04UDC 8/19

Sells fresh

Kenmore Multitude P-ET

56629621 RC PC TY TV TL TD
PTA -708M +38F +0P 95R 8/19
PTA +2.9PL 2.74SCS 3.5DPR 4.5%DCE
PTA +1.15T +1.37UDC +.37FLC 88R 8/19
GTPI +2144G

Kenmore Mogul Delight-ET

142226229 Good Plus-82 @ 2-09 RC TL TD
3-05 3x 247d 20350 5.5 1118 3.7 762

3rd Dam

Our-Favorite Shnazy Rae-ET VG-88 VG-MS RC
3-07 2x 365d 30669 3.4 1066 3.1 963

4th Dam

Scientific Gold Dish Rae-ET EX-90 DOM RC
6-10 3x 365d 44700 3.8 1717 3.0 1363
Life: 1145d 110650 4.1 4586 3.4 3742

Mountfield SSI Dcy Mogul-ET

3006972816 EX-93 GM 8/15 TR TP TC TY TL TD
PTA +1086M +71F +36P 99R 8/19
PTA +2.19T +3.13UDC +2.01FLC GTPI +2335G

Kenmore Snazy Rae-Red-ET

141169826 Excellent-90 EEEEE 2E
4-09 2x 365d 33600 4.1 1364 3.3 1095
6-01 2x 305d 30730 3.7 1127 3.1 949
3-06 2x 305d 24460 3.8 936 3.2 792

29

KENMORE LOYOLA CHARITY-ET

3143029855 RC TL TD 99%RHA-NA
Born: January 16, 2017
GTPI +2042G +2.24T +2.81UDC 8/19

Fresh: September 3, 2019
Milking 56 lbs/day SCC 93

Zimmerview Wonka Loyola-P

73926711 RC PC TY TV TL TD
PTA +1454M +37F +36P 97R 8/19
PTA +0.1PL 3.05SCS -3.5DPR 4.6%DCE
PTA +2.45T +2.93UDC +.44FLC 94R 8/19
GTPI +2093G

Kenmore Mlt Duchess-Red-ET

56629713 PO
GTPI +2200G +2.04UDC 8/19
Sells as Lot 28

3rd Dam

Kenmore Snazy Rae-Red-ET EX-90 EEEEE 2E
4-09 2x 365d 33600 4.1 1364 3.3 1095

4th Dam

Our-Favorite Shnazy Rae-ET VG-88 VG-MS RC
3-07 2x 365d 30669 3.4 1066 3.1 963

Kenmore Multitude P-ET

56629621 RC PC TY TV TL TD
PTA -708M +38F +0P 95R 8/19
PTA +1.15T +1.37UDC +.37FLC GTPI +2144G

Kenmore Mogul Delight-ET

142226229 Good Plus-82 @ 2-09 RC TL TD
3-05 3x 247d 20350 5.5 1118 3.7 762

30

KENMORE WHITE STAR-ET

3137164783 RC 99%RHA-I

Born: July 1, 2016

Dry

Due: Nov. 2, 2019 to Kenmore Triple Crown-Red-ET
3143029863 Ultrasound female

KCKC Bigstar-Red-ET

71692203 TY TV TL TD

PTA +959M +40F +23P 93R 8/19

PTA +3.5PL 2.75SCS +0.4DPR 6.0%DCE

PTA +1.30T +1.75UDC +1.04FLC 90R 8/19

GTPI +2204G

Kenmore Mogul Delight-ET

142226229 Good Plus-82 @ 2-09 RC TL TD

3-05 3x 247d 20350 5.5 1118 3.7 762

3rd Dam

Our-Favorite Shnazy Rae-ET VG-88 VG-MS RC

3-07 2x 365d 30669 3.4 1066 3.1 963

4th Dam

Scientific Gold Dish Rae-ET EX-90 DOM RC

6-10 3x 365d 44700 3.8 1717 3.0 1363

Life: 1145d 110650 4.1 4586 3.4 3742

Mountfield SSI Dcy Mogul-ET

3006972816 EX-93 GM 8/15 TR TP TC TY TL TD

PTA +1086M +71F +36P 99R 8/19

PTA +2.19T +3.13UDC +2.01FLC GTPI +2335G

Kenmore Snazzy Rae-Red-ET

141169826 Excellent-90 EEEEE 2E

4-09 2x 365d 33600 4.1 1364 3.3 1095

6-01 2x 305d 30730 3.7 1127 3.1 949

3-06 2x 305d 24460 3.8 936 3.2 792

31

KENMORE LOYOLA LYLA-P

3137164786 99%RHA-NA

Born: December 10, 2016

Fresh: June 1, 2019

Milking 64 lbs/day SCC 13

Bred: July 3, 2019 to Kenmore Doc Holliday-ET
314771017 GTPI +2660G 8/19 +1633M +3.56T

Zimmerview Wonka Loyola-P

73926711 RC PCPTY TV TL TD

PTA +1454M +37F +36P 97R 8/19

PTA +0.1PL 3.05SCS -3.5DPR 4.6%DCE

PTA +2.45T +2.93UDC +.44FLC 94R 8/19

GTPI +2093G

Kenmore Mlt Daffy 147 P-ET

56629722 Good Plus-81 @ 2-04 TR PO TL TD

3rd Dam

Kenmore Snazzy Rae-Red-ET EX-90 EEEEE 2E

4-09 2x 365d 33600 4.1 1364 3.3 1095

4th Dam

Our-Favorite Shnazy Rae-ET VG-88 VG-MS RC

3-07 2x 365d 30669 3.4 1066 3.1 963

Kenmore Multitude P-ET

56629621 RC PC TY TV TL TD

PTA -708M +38F +0P 95R 8/19

PTA +1.15T +1.37UDC +.37FLC GTPI +2144G

Kenmore Mogul Delight-ET

142226229 Good Plus-82 @ 2-09 RC TL TD

3-05 3x 247d 20350 5.5 1118 3.7 762

32

KENMORE ARMANI SADDLE 279

3143029843 99%RHA-I

Born: October 10, 2016

Fresh: June 10, 2019

Milking 62 lbs/day SCC 15

Bred: Sept. 23, 2019 to Kenmore Doc Holliday-ET
314771017 GTPI +2660G 8/19 +1633M +3.56T

Mr Apples Armani-ET

68571374 Excellent-90 RC CD TP TY TV TL TD

PTA -1413M +32F -2P 99R 8/19

PTA -0.8PL 2.75SCS +1.6DPR 5.2%DCE

PTA +1.70T +2.57UDC +2.05FLC 99R 8/19

GTPI +2083G

Kenmore Sadie Rae-ET

56629609 Good Plus-83 RC TL TD

3-06 2x 305d 26280 3.7 978 3.2 837

2-02 2x 305d 17710 3.9 698 3.2 568

3rd Dam

Our-Favorite Shnazy Rae-ET VG-88 VG-MS RC

3-07 2x 365d 30669 3.4 1066 3.1 963

4th Dam

Scientific Gold Dish Rae-ET EX-90 DOM RC

6-10 3x 365d 44700 3.8 1717 3.0 1363

Life: 1145d 110650 4.1 4586 3.4 3742

Zani Bolton Mascalese-ET

ITA 17990516801 TY TV TL

PTA +1128M +28F +38P 98R 8/19

PTA +1.33T +.59UDC -.53FLC GTPI +1892G

Kenmore Snazzy Rae-Red-ET

141169826 Excellent-90 EEEEE 2E

4-09 2x 365d 33600 4.1 1364 3.3 1095

6-01 2x 305d 30730 3.7 1127 3.1 949

3-06 2x 305d 24460 3.8 936 3.2 792



KENMORE DMN SIZZLE RAE-ET EX-90 RC
DAM OF LOTS 33, 34 & 35

33

KENMORE ARMNI AUTUMN-RED-ET

3133791608 Good Plus-83 @ 2-10
Born: October 27, 2015

Fresh: February 20, 2019

Mr Apples Armani-ET

68571374 Excellent-90 RC CD TP TY TV TL TD
PTA -1413M +32F -2P 99R 8/19
PTA -0.8PL 2.75SCS +1.6DPR 5.2%DCE
PTA +1.70T +2.57UDC +2.05FLC 99R 8/19
GTPI +2083G

Kenmore Dmn Sizzle Rae-ET

141237411 Excellent-90 EEEVE RC
3-06 2x 336d 26027 3.5 917 3.2 845
4-10 2x 299d 27850 3.5 864 3.2 796
2-02 2x 305d 23110 3.5 816 3.2 741

3rd Dam

Scientific Gold Dish Rae-ET EX-90 DOM RC
6-10 3x 365d 44700 3.8 1717 3.0 1363
Life: 1145d 110650 4.1 4586 3.4 3742

4th Dam

Scientific Debutante Rae-ET EX-92 GMD DOM RC
2-02 2x 365d 32930 4.4 1440 3.4 1132
• All-American 4-Yr-Old Cow 2005

Ronelee Toystory Domain-ET

137974489 Excellent-90 GM 12/12 TY TV TL TD
PTA +808M -2F +16P 99R 8/19
PTA +1.18T +.96UDC -.04FLC GTPI +1837G

Our-Favorite Shnazzy Rae-ET

139920383 Very Good-88 VG-MS @ 4-02 RC
3-07 2x 365d 30669 3.4 1066 3.1 963
2-00 2x 365d 29938 3.3 993 3.2 953
5-03 2x 305d 27770 3.7 1023 3.1 864

34

KENMORE ARMANI SYMBOL-ET

3133791607
Born: October 22, 2015

Fresh: September 6, 2019
Milking 84 lbs/day SCC 13

Mr Apples Armani-ET

68571374 Excellent-90 RC CD TP TY TV TL TD
PTA -1413M +32F -2P 99R 8/19
PTA -0.8PL 2.75SCS +1.6DPR 5.2%DCE
PTA +1.70T +2.57UDC +2.05FLC 99R 8/19
GTPI +2083G

Kenmore Dmn Sizzle Rae-ET

141237411 Excellent-90 EEEVE RC
3-06 2x 336d 26027 3.5 917 3.2 845
4-10 2x 299d 27850 3.5 864 3.2 796
2-02 2x 305d 23110 3.5 816 3.2 741

3rd Dam

Scientific Gold Dish Rae-ET EX-90 DOM RC
6-10 3x 365d 44700 3.8 1717 3.0 1363
Life: 1145d 110650 4.1 4586 3.4 3742

4th Dam

Scientific Debutante Rae-ET EX-92 GMD DOM RC
2-02 2x 365d 32930 4.4 1440 3.4 1132
• All-American 4-Yr-Old Cow 2005

Ronelee Toystory Domain-ET

137974489 Excellent-90 GM 12/12 TY TV TL TD
PTA +808M -2F +16P 99R 8/19
PTA +1.18T +.96UDC -.04FLC GTPI +1837G

Our-Favorite Shnazzy Rae-ET

139920383 Very Good-88 VG-MS @ 4-02 RC
3-07 2x 365d 30669 3.4 1066 3.1 963
2-00 2x 365d 29938 3.3 993 3.2 953
5-03 2x 305d 27770 3.7 1023 3.1 864

35

KENMORE ARMNI SILVER-RED-ET

3133791612

Born: November 17, 2015

Sells fresh

Mr Apples Armani-ET

68571374 Excellent-90 RC CD TP TY TV TL TD
PTA -1413M +32F -2P 99R 8/19
PTA -0.8PL 2.75SCS +1.6DPR 5.2%DCE
PTA +1.70T +2.57UDC +2.05FLC 99R 8/19
GTPI +2083G

Kenmore Dmn Sizzle Rae-ET

141237411 Excellent-90 EEEVE RC
3-06 2x 336d 26027 3.5 917 3.2 845
4-10 2x 299d 27850 3.5 864 3.2 796
2-02 2x 305d 23110 3.5 816 3.2 741

3rd Dam

Scientific Gold Dish Rae-ET EX-90 DOM RC
6-10 3x 365d 44700 3.8 1717 3.0 1363
Life: 1145d 110650 4.1 4586 3.4 3742

4th Dam

Scientific Debutante Rae-ET EX-92 GMD DOM RC
2-02 2x 365d 32930 4.4 1440 3.4 1132
• All-American 4-Yr-Old Cow 2005

Ronelee Toystory Domain-ET

137974489 Excellent-90 GM 12/12 TY TV TL TD
PTA +808M -2F +16P 99R 8/19
PTA +1.18T +.96UDC -.04FLC GTPI +1837G

Our-Favorite Shnazy Rae-ET

139920383 Very Good-88 VG-MS @ 4-02 RC
3-07 2x 365d 30669 3.4 1066 3.1 963
2-00 2x 365d 29938 3.3 993 3.2 953
5-03 2x 305d 27770 3.7 1023 3.1 864

36

KENMORE ARMANI SIZZLE-RED

3133791616 Good Plus-81 @ 2-08 99%RHA-I

Born: December 1, 2015

Fresh: April 20, 2019

Milking 64 lbs/day SCC 38

Bred: May 31, 2019 to Kenmore Doc Holliday-ET

314771017 GTPI +2660G 8/19 +1633M +3.56T

Mr Apples Armani-ET

68571374 Excellent-90 RC CD TP TY TV TL TD
PTA -1413M +32F -2P 99R 8/19
PTA -0.8PL 2.75SCS +1.6DPR 5.2%DCE
PTA +1.70T +2.57UDC +2.05FLC 99R 8/19
GTPI +2083G

Kenmore Soltice Rae-ET

56629623 TL TD
3-06 2x 284d 22250 3.5 780 3.2 719
2-06 2x 293c 15800 4.0 630 3.3 524

3rd Dam

Our-Favorite Shnazy Rae-ET VG-88 VG-MS RC
3-07 2x 365d 30669 3.4 1066 3.1 963

4th Dam

Scientific Gold Dish Rae-ET EX-90 DOM RC
6-10 3x 365d 44700 3.8 1717 3.0 1363
Life: 1145d 110650 4.1 4586 3.4 3742

Zani Bolton Mascalese-ET

ITA 17990516801 TY TV TL
PTA +1128M +28F +38P 98R 8/19
PTA +1.33T +.59UDC -.53FLC GTPI +1892G

Kenmore Dmn Sizzle Rae-ET

141237411 Excellent-90 EEEVE RC
3-06 2x 336d 26027 3.5 917 3.2 845
4-10 2x 299d 27850 3.5 864 3.2 796
2-02 2x 305d 23110 3.5 816 3.2 741

37

KENMORE DRACO ALLOY-ET

3133791596 Good-76 @ 2-11 RC TL TD 99%RHA-I

Born: September 1, 2015

GTPI +2161G +1472M +2.24UDC 8/19

Fresh: April 7, 2019

Milking 76 lbs/day SCC 62

Bred: Aug. 2, 2019 to Kenmore Doc Holliday-ET

314771017 GTPI +2660G 8/19 +1633M +3.56T

Mr Coin Draco 15006-ET

3012574853 TR CD TY TV TL TD
PTA +1927M +57F +64P 99R 8/19
PTA +7.5PL 2.82SCS +0.9DPR 4.9%DCE
PTA +1.37T +2.55UDC -.91FLC 98R 8/19
GTPI +2551G

Kenmore Adalida Rae-ET

56629655 TL TD

3rd Dam

Our-Favorite Shnazy Rae-ET VG-88 VG-MS RC
3-07 2x 365d 30669 3.4 1066 3.1 963

4th Dam

Scientific Gold Dish Rae-ET EX-90 DOM RC
6-10 3x 365d 44700 3.8 1717 3.0 1363
Life: 1145d 110650 4.1 4586 3.4 3742

Zani Bolton Mascalese-ET

ITA 17990516801 TY TV TL
PTA +1128M +28F +38P 98R 8/19
PTA +1.33T +.59UDC -.53FLC GTPI +1892G

Kenmore Dmn Sizzle Rae-ET

141237411 Excellent-90 EEEVE RC
3-06 2x 336d 26027 3.5 917 3.2 845
4-10 2x 299d 27850 3.5 864 3.2 796
2-02 2x 305d 23110 3.5 816 3.2 741

38

KENMORE MULTITUDE SLICE P

3133791604 Good Plus-80 @ 2-10 PO
Born: October 1, 2015

Fresh: June 12, 2019
Milking 62 lbs/day SCC 13

Bred: Aug. 12, 2019 to Kenmore Doc Holliday-ET
314771017 GTPI +2660G 8/19 +1633M +3.56T

Kenmore Multitude P-ET

56629621 RC PC TY TV TL TD
PTA -708M +38F +0P 95R 8/19
PTA +2.9PL 2.74SCS 3.5DPR 4.5%DCE
PTA +1.15T +1.37UDC +.37FLC 88R 8/19
GTPI +2144G

Kenmore Glamour Rae-TW

56629625 RC TL TD

3rd Dam

Our-Favorite Shnazzy Rae-ET VG-88 VG-MS RC
3-07 2x 365d 30669 3.4 1066 3.1 963

4th Dam

Scientific Gold Dish Rae-ET EX-90 DOM RC
6-10 3x 365d 44700 3.8 1717 3.0 1363
Life: 1145d 110650 4.1 4586 3.4 3742

Co-op Bosside Massey-ET

63026939 GM 12/14 TP TC TY TV TL TD
PTA +674M +40F +38P 99R 8/19
PTA +.83T +1.30UDC +.72FLC GTPI +2189G

Kenmore Dmn Sizzle Rae-ET

141237411 Excellent-90 EEEVE RC
3-06 2x 336d 26027 3.5 917 3.2 845
4-10 2x 299d 27850 3.5 864 3.2 796
2-02 2x 305d 23110 3.5 816 3.2 741

39

KENMORE ABSOLUTE SPARK

3143029858 RC
Born: May 1, 2017

Fresh: June 5, 2019
Milking 62 lbs/day SCC 25

Bred: Sept. 25, 2019 to Kenmore Loyal P-Red
566H01296 GTPI +2.23T +2.76UDC

Apples Absolute-Red-ET

139358472 Excellent-94 CV TC TY TL TF
PTA -1478M +6F -10P 99R 8/19
PTA -4.4PL 3.47SCS -4.4DPR 10.9%DCE
PTA +2.88T +3.43UDC +2.13FLC 99R 8/19
GTPI +1509G

Kenmore Dakker Rae

142226162 Very Good-85 VG-MS @ 4-07 RC TL TD

3rd Dam

Our-Favorite Shnazzy Rae-ET VG-88 VG-MS RC
3-07 2x 365d 30669 3.4 1066 3.1 963

4th Dam

Scientific Gold Dish Rae-ET EX-90 DOM RC
6-10 3x 365d 44700 3.8 1717 3.0 1363
Life: 1145d 110650 4.1 4586 3.4 3742

Kings-Ransom O Dakker-ET

65828007 RC TY TV TL TD
PTA +665M +31F +32P 99R 8/19
PTA +.51T +.80UDC -.04FLC GTPI +2029G

Kenmore Dazzle Rae-Red-ET

141028378 Good Plus-81

40

KENMORE TAKES2 2TANGO

56629703 Good Plus-83 VG-MS @ 2-10
Born: August 14, 2014

Fresh: May 4, 2019
Milking 90 lbs/day SCC 35

Bred: Sept. 25, 2019 to Kenmore Loyal P-Red
566H01296 GTPI +2.23T +2.76UDC

Mr Welcome Hill Tango-ET

70750485 TP TC TY TV TL TD
PTA +1684M +56F +46P 99R 8/19
PTA +0.6PL 2.99SCS +0.8DPR 6.5%DCE
PTA +1.52T +1.55UDC +.66FLC 99R 8/19
GTPI +2272G

Kenmore Epic Demi Rae-ET

142017074 Good Plus-84 @ 3-02 RC
2-01 2x 305d 17640 4.0 705 3.3 590

3rd Dam

Our-Favorite Shnazzy Rae-ET VG-88 VG-MS RC
3-07 2x 365d 30669 3.4 1066 3.1 963

4th Dam

Scientific Gold Dish Rae-ET EX-90 DOM RC
6-10 3x 365d 44700 3.8 1717 3.0 1363
Life: 1145d 110650 4.1 4586 3.4 3742

Generations Epic-ET

CAN 11104016 EX-94 GM 12/14 TR TP TY TV TL TD
PTA +1003M +26F +31P 92R 8/19
PTA +1.78T +1.52UDC +1.64FLC GTPI +2191G

Kenmore Dazzle Rae-Red-ET

141028378 Good Plus-81

41

KENMORE HEINZ HANNAH

3137164791 99%RHA-I
Born: October 18, 2016

Due: October 4, 2019

De-Su Heinz 12342-ET

72851885 Excellent-90 TR BY TP TV TL TD
PTA +630M +15F +20P 99R 8/19
PTA +5.9PL 2.56SCS +4.0DPR 3.2%DCE
PTA +1.35T +2.27UDC +.62FLC 97R 8/19
GTPI +2325G

Kenmore Takes2 2Tango

56629703 Good Plus-83 VG-MS @ 2-10
Sells as Lot 40

3rd Dam

Kenmore Dazzle Rae-Red-ET GP-81

4th Dam

Our-Favorite Shnazzy Rae-ET VG-88 VG-MS RC
3-07 2x 365d 30669 3.4 1066 3.1 963

5th Dam

Scientific Gold Dish Rae-ET EX-90 DOM RC
6-10 3x 365d 44700 3.8 1717 3.0 1363

Mr Welcome Hill Tango-ET

70750485 TP TC TY TV TL TD
PTA +1684M +56F +46P 99R 8/19
PTA +1.52T +1.55UDC +.66FLC GTPI +2272G

Kenmore Epic Demi Rae-ET

142017074 Good Plus-84 @ 3-02 RC
2-01 2x 305d 17640 4.0 705 3.3 590

42

KENMORE ZUMBA DISC P

3133791605 Good Plus-81 @ 2-10
Born: October 10, 2015

Sells fresh

Lorka Zumba P-ET

CAN 108343715 TR PC TY TV TL TD
PTA +539M +17F +36P 94R 8/19
PTA +2.5PL 2.91SCS +0.3DPR 5.0%DCE
PTA +.16T +.58UDC +.41FLC 91R 8/19
GTPI +2013G

Kenmore Dezi Rae-ET

142226153 TR BY TL TD
GTPI +2191G +2.32UDC 8/19

3rd Dam

Scientific Gold Dish Rae-ET EX-90 DOM RC

6-10 3x 365d 44700 3.8 1717 3.0 1363
Life: 1145d 110650 4.1 4586 3.4 3742

4th Dam

Scientific Debutante Rae-ET EX-92 GMD DOM RC
2-02 2x 365d 32930 4.4 1440 3.4 1132

• All-American 4-Yr-Old Cow 2005

Ronelee Toystory Domain-ET

137974489 Excellent-90 GM 12/12 TY TV TL TD
PTA +808M -2F +16P 99R 8/19
PTA +1.18T +.96UDC -.04FLC GTPI +1837G

Our-Favorite Shnazzy Rae-ET

139920383 Very Good-88 VG-MS @ 4-02 RC
3-07 2x 365d 30669 3.4 1066 3.1 963
2-00 2x 365d 29938 3.3 993 3.2 953
5-03 2x 305d 27770 3.7 1023 3.1 864

43

KENMORE MULTITUDE PIXY-RED

3133791601
Born: September 30, 2015

Fresh: February 15, 2019

Kenmore Multitude P-ET

56629621 RC PC TY TV TL TD
PTA -708M +38F +0P 95R 8/19
PTA +2.9PL 2.74SCS 3.5DPR 4.5%DCE
PTA +1.15T +1.37UDC +.37FLC 88R 8/19
GTPI +2144G

Kenmore CP3 Rae-Red-ET

141876793 Very Good-87 VVVVV

3rd Dam

Scientific Gold Dish Rae-ET EX-90 DOM RC

6-10 3x 365d 44700 3.8 1717 3.0 1363
Life: 1145d 110650 4.1 4586 3.4 3742

4th Dam

Scientific Debutante Rae-ET EX-92 GMD DOM RC
2-02 2x 365d 32930 4.4 1440 3.4 1132

• All-American 4-Yr-Old Cow 2005

Sandy-Valley Colt P-Red-TW

68731810 PC TY TV TL TD
PTA +454M -38F +10P 99R 8/19
PTA +.18T +1.15UDC +.00FLC GTPI +1762G

Our-Favorite Shnazzy Rae-ET

139920383 Very Good-88 VG-MS @ 4-02 RC
3-07 2x 365d 30669 3.4 1066 3.1 963
2-00 2x 365d 29938 3.3 993 3.2 953
5-03 2x 305d 27770 3.7 1023 3.1 864

44

KENMORE DOORSOPEN BREEZE-ET

3137164774 99%RHA-NA RC

Born: June 28, 2016

Fresh: Feb. 27, 2019

Milking 70 lbs/day SCC 13

Bred: Sept. 22, 2019 to Farnear Altitude-Red-ET

551H03617 GPTAT +3.79T +3.45UDC 8/19

Ladys-Manor Doorsopen-ET

3013129323 TR TP TY TV TL TD

PTA +424M +58F +22P 99R 8/19

PTA +4.6PL 2.50SCS -2.2DPR 5.9%DCE

PTA +2.65T +2.67UDC +1.01FLC 98R 8/19

GTPI +2289G

Kenmore Sharona P-Red-ET

56629670 Very Good-88 VVVVV PO TL TD

3rd Dam

Scientific Gold Dish Rae-ET EX-90 DOM RC

6-10 3x 365d 44700 3.8 1717 3.0 1363

Life: 1145d 110650 4.1 4586 3.4 3742

4th Dam

Scientific Debutante Rae-ET EX-92 GMD DOM RC

2-02 2x 365d 32930 4.4 1440 3.4 1132

• All-American 4-Yr-Old Cow 2005

Mr Rollen-NS Camr Long P-ET

71446356 RC PC TY TV TL TD

PTA -245M +9F +7P 97R 8/19

PTA +.85T +1.52UDC +.01FLC GTPI +1924G

Our-Favorite Shnazy Rae-ET

139920383 Very Good-88 VG-MS @ 4-02 RC

3-07 2x 365d 30669 3.4 1066 3.1 963

2-00 2x 365d 29938 3.3 993 3.2 953

5-03 2x 305d 27770 3.7 1023 3.1 864

45

KENMORE LOYOLA SHAKER

3147771003 99%RHA-NA PO

Born: September 20, 2017

Due after sale date to Kenmore Triple-Crown-Red-ET

3143029863

Zimmerview Wonka Loyola-P

73926711 RC PCPTV TV TL TD

PTA +1454M +37F +36P 97R 8/19

PTA +0.1PL 3.05SCS -3.5DPR 4.6%DCE

PTA +2.45T +2.93UDC +.44FLC 94R 8/19

GTPI +2093G

Kenmore Shasta P Rae-ET

56629671 Good Plus-80 @ 2-08 PO TL TD

3rd Dam

Scientific Gold Dish Rae-ET EX-90 DOM RC

6-10 3x 365d 44700 3.8 1717 3.0 1363

Life: 1145d 110650 4.1 4586 3.4 3742

4th Dam

Scientific Debutante Rae-ET EX-92 GMD DOM RC

2-02 2x 365d 32930 4.4 1440 3.4 1132

• All-American 4-Yr-Old Cow 2005

Mr Rollen-NS Camr Long P-ET

71446356 RC PC TY TV TL TD

PTA -245M +9F +7P 97R 8/19

PTA +.85T +1.52UDC +.01FLC GTPI +1924G

Our-Favorite Shnazy Rae-ET

139920383 Very Good-88 VG-MS @ 4-02 RC

3-07 2x 365d 30669 3.4 1066 3.1 963

2-00 2x 365d 29938 3.3 993 3.2 953

5-03 2x 305d 27770 3.7 1023 3.1 864

46

KENMORE PETY PENNY

3137164788

Born: November 6, 2016

Fresh in July, 2019

Milking 66 lbs/day

Bred: Sept. 15, 2019 to Kenmore Doc Holliday-ET

314771017 GTPI +2660G 8/19 +1633M +3.56T

Siemers Mogul Pety

3010660326 Excellent-90 TR TC TY TV TL TD

PTA +1062M +35F +35P 99R 8/19

PTA +3.2PL 3.07SCS -0.4DPR 2.9%DCE

PTA +2.21T +3.08UDC +1.48FLC 998R 8/19

GTPI +2278G

Kenmore Sunflower Rae-ET

56629661 Good Plus-83 VG-MS @ 3-06 TL TD

3rd Dam

Scientific Gold Dish Rae-ET EX-90 DOM RC

6-10 3x 365d 44700 3.8 1717 3.0 1363

Life: 1145d 110650 4.1 4586 3.4 3742

4th Dam

Scientific Debutante Rae-ET EX-92 GMD DOM RC

2-02 2x 365d 32930 4.4 1440 3.4 1132

• All-American 4-Yr-Old Cow 2005

Gen-I-Beq Aikman-ET

CAN 106807394 VG-86-CAN RC TP TY TV TL TD

PTA +276M +64F +33P 99R 8/19

PTA +.76T +1.18UDC +.92FLC GTPI +2222G

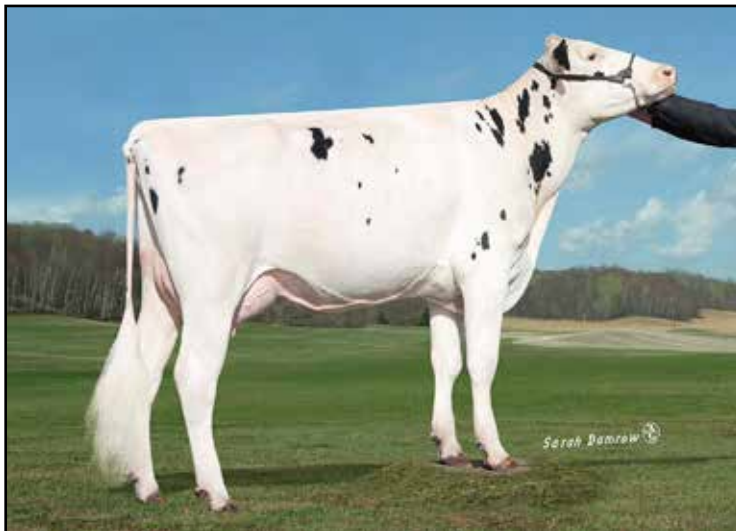
Our-Favorite Shnazy Rae-ET

139920383 Very Good-88 VG-MS @ 4-02 RC

3-07 2x 365d 30669 3.4 1066 3.1 963

2-00 2x 365d 29938 3.3 993 3.2 953

5-03 2x 305d 27770 3.7 1023 3.1 864



KENMORE SNOWANGEL RAE-ET EX-90 RC
2ND DAM OF LOTS 47 THRU 51

47

KENMORE SF CLOUD 9-ET

3133791595 TR TL TD
Born: July 10, 2015
GTPI +2368G +1386M 8/19

Fresh: June 3, 2019
Milking 96 lbs/day SCC 429

Mr Sunview Coin Sunfish-ET

3012643773 RC TP TL TD
PTA +1743M +58F +61P 95R 8/19
PTA +4.1PL 2.67SCS -2.0DPR 6.7%DCE
PTA +1.47T +1.60UDC +.47FLC 94R 8/19
GTPI +2362G

Kenmore Cloudless Day-ET

56629611 Good Plus-82 @ 3-08 RC TL TD
GTPI +2305G +1077M 8/19
3-02 2x 305d 23920 3.9 921 3.2 766

3rd Dam

Our-Favorite Shnazy Rae-ET VG-88 VG-MS RC
3-07 2x 365d 30669 3.4 1066 3.1 963

4th Dam

Scientific Gold Dish Rae-ET EX-90 DOM RC
6-10 3x 365d 44700 3.8 1717 3.0 1363
Life: 1145d 110650 4.1 4586 3.4 3742

Minnigan-Hills Day-ET

69774730 GM 8/15 TP TC TY TV TL TD
PTA +1412M +38F +40P 99R 8/19
PTA +1.89T +2.05UDC +.62FLC GTPI +2318G

Kenmore Snowangel Rae-ET

141454791 Excellent-90 EEEVV RCTY
3-09 2x 365d 30890 4.3 1321 3.0 935
2-01 2x 305d 24270 4.4 1061 3.5 847
5-03 2x 365d 24240 3.9 948 3.4 816
Life: 1576d 108100 4.1 4455 3.3 3573

48

KENMORE JEDI ANGEL-ET

3133791636 RC TL TD 99%RHA-I
Born: March 1, 2016
GTPI +2357G +1591M 8/19

Fresh: May 16, 2019
Milking 70 lbs/day SCC 31

Bred: In July, 2019 to Kenmore Doc Holliday-ET
314771017 GTPI +2660G 8/19 +1633M +3.56T

S-S-I Montross Jedi-ET

3123886035 Excellent-93 GM 8/18 TR TP TC TY TV TL
PTA +2631M +40F +87P 99R 8/19
PTA +6.9PL 2.70SCS +0.6DPR 3.1%DCE
PTA +1.51T +1.68UDC -.36FLC 99R 8/19
GTPI +2554G

Kenmore Cloudless Day-ET

56629611 Good Plus-82 @ 3-08 RC TL TD
GTPI +2305G +1077M 8/19
3-02 2x 305d 23920 3.9 921 3.2 766

3rd Dam

Our-Favorite Shnazy Rae-ET VG-88 VG-MS RC
3-07 2x 365d 30669 3.4 1066 3.1 963

4th Dam

Scientific Gold Dish Rae-ET EX-90 DOM RC
6-10 3x 365d 44700 3.8 1717 3.0 1363
Life: 1145d 110650 4.1 4586 3.4 3742

Minnigan-Hills Day-ET

69774730 GM 8/15 TP TC TY TV TL TD
PTA +1412M +38F +40P 99R 8/19
PTA +1.89T +2.05UDC +.62FLC GTPI +2318G

Kenmore Snowangel Rae-ET

141454791 Excellent-90 EEEVV RCTY
3-09 2x 365d 30890 4.3 1321 3.0 935
2-01 2x 305d 24270 4.4 1061 3.5 847
5-03 2x 365d 24240 3.9 948 3.4 816
Life: 1576d 108100 4.1 4455 3.3 3573

49

KENMORE JEDI LEAH-ET

3133791635 Good Plus-81 @ 2-05 TR TL TD 99%RHA
 Born: March 1, 2016
 GTPI +2375G +1475M 8/19

Milking 60 lbs/day SCC 31

Due: Dec. 20, 2019 to Kenmore Triple-Crown-Red-ET
 3143029863

S-S-I Montross Jedi-ET

3123886035 Excellent-93 GM 8/18 TR TP TC TY TV TL
 PTA +2631M +40F +87P 99R 8/19
 PTA +6.9PL 2.70SCS +0.6DPR 3.1%DCE
 PTA +1.51T +1.68UDC -.36FLC 99R 8/19
 GTPI +2554G

Kenmore Cloudless Day-ET

56629611 Good Plus-82 @ 3-08 RC TL TD
 GTPI +2305G +1077M 8/19
 3-02 2x 305d 23920 3.9 921 3.2 766

3rd Dam

Our-Favorite Shnazzy Rae-ET VG-88 VG-MS RC
 3-07 2x 365d 30669 3.4 1066 3.1 963

4th Dam

Scientific Gold Dish Rae-ET EX-90 DOM RC
 6-10 3x 365d 44700 3.8 1717 3.0 1363
 Life: 1145d 110650 4.1 4586 3.4 3742

Minnigan-Hills Day-ET

69774730 GM 8/15 TP TC TY TV TL TD
 PTA +1412M +38F +40P 99R 8/19
 PTA +1.89T +2.05UDC +.62FLC GTPI +2318G

Kenmore Snowangel Rae-ET

141454791 Excellent-90 EEEVV RC TY
 3-09 2x 365d 30890 4.3 1321 3.0 935
 2-01 2x 305d 24270 4.4 1061 3.5 847
 5-03 2x 365d 24240 3.9 948 3.4 816
 Life: 1576d 108100 4.1 4455 3.3 3573

50

KENMORE JEDI CALI-ET

3133791634 RC TL TD 99%RHA-I
 Born: March 1, 2016
 GTPI +2438G +1976M 8/19

Fresh: September 1, 2019
 Milking 102 lbs/day SCC 23

S-S-I Montross Jedi-ET

3123886035 Excellent-93 GM 8/18 TR TP TC TY TV TL
 PTA +2631M +40F +87P 99R 8/19
 PTA +6.9PL 2.70SCS +0.6DPR 3.1%DCE
 PTA +1.51T +1.68UDC -.36FLC 99R 8/19
 GTPI +2554G

Kenmore Cloudless Day-ET

56629611 Good Plus-82 @ 3-08 RC TL TD
 GTPI +2305G +1077M 8/19
 3-02 2x 305d 23920 3.9 921 3.2 766

3rd Dam

Our-Favorite Shnazzy Rae-ET VG-88 VG-MS RC
 3-07 2x 365d 30669 3.4 1066 3.1 963

4th Dam

Scientific Gold Dish Rae-ET EX-90 DOM RC
 6-10 3x 365d 44700 3.8 1717 3.0 1363
 Life: 1145d 110650 4.1 4586 3.4 3742

Minnigan-Hills Day-ET

69774730 GM 8/15 TP TC TY TV TL TD
 PTA +1412M +38F +40P 99R 8/19
 PTA +1.89T +2.05UDC +.62FLC GTPI +2318G

Kenmore Snowangel Rae-ET

141454791 Excellent-90 EEEVV RC TY
 3-09 2x 365d 30890 4.3 1321 3.0 935
 2-01 2x 305d 24270 4.4 1061 3.5 847
 5-03 2x 365d 24240 3.9 948 3.4 816
 Life: 1576d 108100 4.1 4455 3.3 3573

51

KENMORE JEDI ASHTON-ET

3133791637 Good-78 @ 2-05 RC TL TD 99%RHA-I
 Born: March 1, 2016
 GTPI +2307G +2303M +77P 8/19

Fresh: June 10, 2019
 Milking 90 lbs/day SCC 17

S-S-I Montross Jedi-ET

3123886035 Excellent-93 GM 8/18 TR TP TC TY TV TL
 PTA +2631M +40F +87P 99R 8/19
 PTA +6.9PL 2.70SCS +0.6DPR 3.1%DCE
 PTA +1.51T +1.68UDC -.36FLC 99R 8/19
 GTPI +2554G

Kenmore Cloudless Day-ET

56629611 Good Plus-82 @ 3-08 RC TL TD
 GTPI +2305G +1077M 8/19
 3-02 2x 305d 23920 3.9 921 3.2 766

3rd Dam

Our-Favorite Shnazzy Rae-ET VG-88 VG-MS RC
 3-07 2x 365d 30669 3.4 1066 3.1 963

4th Dam

Scientific Gold Dish Rae-ET EX-90 DOM RC
 6-10 3x 365d 44700 3.8 1717 3.0 1363
 Life: 1145d 110650 4.1 4586 3.4 3742

Minnigan-Hills Day-ET

69774730 GM 8/15 TP TC TY TV TL TD
 PTA +1412M +38F +40P 99R 8/19
 PTA +1.89T +2.05UDC +.62FLC GTPI +2318G

Kenmore Snowangel Rae-ET

141454791 Excellent-90 EEEVV RC TY
 3-09 2x 365d 30890 4.3 1321 3.0 935
 2-01 2x 305d 24270 4.4 1061 3.5 847
 5-03 2x 365d 24240 3.9 948 3.4 816
 Life: 1576d 108100 4.1 4455 3.3 3573

Kenmore Holsteins Milking Herd Dispersal



SCIENTIFIC GOLD DISH RAE-ET EX-90 DOM RC
APPEARS IN EVERY PEDIGREE OF LOTS 18 THRU 53

52

KENMORE SOLTICE 295-ET

3143029859 RC 99%RHA-NA
Born: March 1, 2017

Fresh: July 1, 2019

Calbrett Soltice-ET

CAN 11715027 RC TP TY TV TL TD
PTA +1009M +57F +43P 91R 8/19
PTA +3.6PL 2.84SCS +2.9DPR 4.0%DCE
PTA +1.57T +1.40UDC +1.02FLC 88R 8/19
GTPI +2459G

Kenmore DB Cora-Red-ET

3130321021 TL TD
GTPI +2172G 8/19

3rd Dam

Kenmore Snowangel Rae-ET EX-90 RC
3-09 2x 365d 30890 4.3 1321 3.0 935
Life: 1576d 108100 4.1 4455 3.3 3573

4th Dam

Our-Favorite Shnazzy Rae-ET VG-88 VG-MS RC
3-07 2x 365d 30669 3.4 1066 3.1 963

Texel Beauty Debutant-Red

NLD 762769560 TY TV TL
PTA +786M +17F +37P 96R 8/19
PTA +.52T +.59UDC +.00FLC GTPI +1995G

Kenmore Cloudless Day-ET

56629611 Good Plus-82 @ 3-08 RC TL TD
GTPI +2305G +1077M 8/19
3-02 2x 305d 23920 3.9 921 3.2 766

53

KENMORE MW CAST 277-ET

3143029841 RC
Born: January 6, 2017

Fresh: August 1, 2019
Milking 68 lbs/day SCC 22

Bred: Sept. 26, 2019 to Kenmore Doc Holliday-ET
314771017 GTPI +2660G 8/19 +1633M +3.56T

Mr DDS Mega-Watt-ET

3010365126 RC TC TY TV TL TD
PTA +593M +15F +33P 90R 8/19
PTA +6.4PL 2.55SCS +2.9DPR 4.1%DCE
PTA +1.16T +1.29UDC +.40FLC 85R 8/19
GTPI +2273G

Kenmore DB Cora-Red-ET

3130321021 TL TD
GTPI +2172G 8/19

3rd Dam

Kenmore Snowangel Rae-ET EX-90 RC
3-09 2x 365d 30890 4.3 1321 3.0 935
Life: 1576d 108100 4.1 4455 3.3 3573

4th Dam

Our-Favorite Shnazzy Rae-ET VG-88 VG-MS RC
3-07 2x 365d 30669 3.4 1066 3.1 963

Texel Beauty Debutant-Red

NLD 762769560 TY TV TL
PTA +786M +17F +37P 96R 8/19
PTA +.52T +.59UDC +.00FLC GTPI +1995G

Kenmore Cloudless Day-ET

56629611 Good Plus-82 @ 3-08 RC TL TD
GTPI +2305G +1077M 8/19
3-02 2x 305d 23920 3.9 921 3.2 766



RONELEE BOLIVER DREARY-ET VG-86 DOM
2ND DAM OF LOTS 54 THRU 60

54

BRAVADA DELTA DEZ-ET

3133791615 Good Plus-83 @ 2-09
Born: November 12, 2015
GTPI +2450G +2.44T +2.27UDC 8/19
Dry

Due sale time to Kenmore Triple-Crown-Red-ET
3143029863

Mountfield SSI Dcy Mogul-ET

3006972816 EX-93 GM 8/15 TR TP TC TY TL TD
PTA +1086M +71F +36P 99R 8/19
PTA +2.19T +3.13UDC +2.01FLC GTPI +2335G

Miss OCD Robst Delicious-ET

3006989479 Very Good-87 GMD DOM
2-05 2x 365d 33780 3.3 1121 3.3 1111

Generations Epic-ET

CAN 11104016 EX-94 GM 12/14 TR TP TY TV TL TD
PTA +1003M +26F +31P 92R 8/19
PTA +1.78T +1.52UDC +1.64FLC GTPI +2191G

Ronelee Boliver Dreary-ET

139531796 Very Good-86 VG-MS DOM
2-04 2x 365d 27970 3.9 1102 3.5 989

Mr Mogul Delta 1427-ET

72128216 GM 8/19 TR TC TY TV TL TD
PTA +1613M +88F +54P 99R 8/19
PTA +7.4PL 2.90SCS +0.4DPR 4.2%DCE
PTA +2.12T +2.82UDC +1.48FLC 99R 8/19
GTPI +2698G

T-Gen-AC Drearys Emma-ET

71818796 Very Good-86 VG-MS @ 3-03
2-08 2x 305d 22310 4/2 937 3.8 832

3rd Dam

Ronelee Outside Dabble-ET EX-91 2E GMD DOM

5-03 3x 365d 44530 3.6 1612 3.1 1397
Life: 2021d 185730 3.6 6757 3.2 5966

• Numerous sons in AI

4th Dam

Ronelee Rudolph Dimple EX-93 EEEEE 2E DOM

5-08 3x 365d 45290 3.7 1713 3.1 1428
Life: 1582d 164010 3.6 5900 3.2 5284

5th Dam

Select Mark Dolly EX-95 EEEEE 4E GMD DOM

6-07 3x 365d 45870 4.0 1846 3.1 1431
Life: 3295d 276300 3.6 9992 3.2 8964

6th Dam

Select Southwind Dinah EX-91 EEEEE 2E

5-11 3x 365d 30080 3.7 1124 3.3 981
Life: 1505d 103810 3.9 4010 3.3 3456

7th Dam

Select Mars Tony Diana VG-86 VG-MS

3-04 2x 365d 26200 4.2 1112 3.5 916

8th Dam

Dinah Select Wayne Dixie VG-85

3-07 2x 305d 23460 4.0 935 3.4 789

55

BRAVADA DELTA ELEVATE-ET

3133791614 TR TL TD

Born: November 13, 2015

GTPI +2454G 8/19

Dry

Bred to Kenmore Doc Holliday-ET

314771017 GTPI +2660G 8/19 +1633M +3.56T

Mr Mogul Delta 1427-ET

72128216 GM 8/19 TR TC TY TV TL TD

PTA +1613M +88F +54P 99R 8/19

PTA +7.4PL 2.90SCS +0.4DPR 4.2%DCE

PTA +2.12T +2.82UDC +1.48FLC 99R 8/19

GTPI +2698G

T-Gen-AC Drearys Emma-ET

71818796 Very Good-86 VG-MS @ 3-03

2-08 2x 305d 22310 4/2 937 3.8 832

3rd Dam

Ronelee Outside Dabble-ET EX-91 2E GMD DOM

5-03 3x 365d 44530 3.6 1612 3.1 1397

Life: 2021d 185730 3.6 6757 3.2 5966

4th Dam

Ronelee Rudolph Dimple EX-93 EEEEE 2E DOM

5-08 3x 365d 45290 3.7 1713 3.1 1428

Life: 1582d 164010 3.6 5900 3.2 5284

Generations Epic-ET

CAN 11104016 EX-94 GM 12/14 TR TP TY TV TL TD

PTA +1003M +26F +31P 92R 8/19

PTA +1.78T +1.52UDC +1.64FLC GTPI +2191G

Ronelee Boliver Dreary-ET

139531796 Very Good-86 VG-MS DOM

2-04 2x 365d 27970 3.9 1102 3.5 989

56

BRAVADA DAMARIS DEBBIE-ET

3133791621 Good Plus-81 @ 2-07 TL TD 99%RHA

Born: January 14, 2016

GTPI +238G 8/19

Fresh: June 20, 2019

Milking 84 lbs/day SCC 22

Bred: July 28, 2019 to Kenmore Doc Holliday-ET

314771017 GTPI +2660G 8/19 +1633M +3.56T

S-S-I Sterling Damaris-ET

3011538150 TR TP TY TV TL TD

PTA +1405M +48F +45P 99R 8/19

PTA +8.6PL 3.00SCS +0.4DPR 5.8%DCE

PTA +1.57T +1.78UDC +1.62FLC 99R 8/19

PTA +2442G

T-Gen-AC Drearys Emma-ET

71818796 Very Good-86 VG-MS @ 3-03

2-08 2x 305d 22310 4/2 937 3.8 832

3rd Dam

Ronelee Outside Dabble-ET EX-91 2E GMD DOM

5-03 3x 365d 44530 3.6 1612 3.1 1397

Life: 2021d 185730 3.6 6757 3.2 5966

4th Dam

Ronelee Rudolph Dimple EX-93 EEEEE 2E DOM

5-08 3x 365d 45290 3.7 1713 3.1 1428

Life: 1582d 164010 3.6 5900 3.2 5284

Generations Epic-ET

CAN 11104016 EX-94 GM 12/14 TR TP TY TV TL TD

PTA +1003M +26F +31P 92R 8/19

PTA +1.78T +1.52UDC +1.64FLC GTPI +2191G

Ronelee Boliver Dreary-ET

139531796 Very Good-86 VG-MS DOM

2-04 2x 365d 27970 3.9 1102 3.5 989

57

BRAVADA DAMARIS DREAMER-ET

3133791624 Good Plus-80 @ 2-07 TR TL TD 99%RHA

Born: January 20, 2016

GTPI +2380G 8/19

Fresh: June 1, 2019

Milking 78 lbs/day SCC 13

Bred: Aug. 15, 2019 to Kenmore Doc Holliday-ET

314771017 GTPI +2660G 8/19 +1633M +3.56T

S-S-I Sterling Damaris-ET

3011538150 TR TP TY TV TL TD

PTA +1405M +48F +45P 99R 8/19

PTA +8.6PL 3.00SCS +0.4DPR 5.8%DCE

PTA +1.57T +1.78UDC +1.62FLC 99R 8/19

PTA +2442G

T-Gen-AC Drearys Emma-ET

71818796 Very Good-86 VG-MS @ 3-03

2-08 2x 305d 22310 4/2 937 3.8 832

3rd Dam

Ronelee Outside Dabble-ET EX-91 2E GMD DOM

5-03 3x 365d 44530 3.6 1612 3.1 1397

Life: 2021d 185730 3.6 6757 3.2 5966

4th Dam

Ronelee Rudolph Dimple EX-93 EEEEE 2E DOM

5-08 3x 365d 45290 3.7 1713 3.1 1428

Life: 1582d 164010 3.6 5900 3.2 5284

Generations Epic-ET

CAN 11104016 EX-94 GM 12/14 TR TP TY TV TL TD

PTA +1003M +26F +31P 92R 8/19

PTA +1.78T +1.52UDC +1.64FLC GTPI +2191G

Ronelee Boliver Dreary-ET

139531796 Very Good-86 VG-MS DOM

2-04 2x 365d 27970 3.9 1102 3.5 989

58

BRAVADA DAMARIS DIME-ET

3133791619 Good-78 @ 2-08 TR TL TD 99%RHA

Born: December 25, 2015

GTPI +2288G 8/19

Fresh: June 7, 2019

Milking 80 lbs/day SCC 54

S-S-I Sterling Damaris-ET

3011538150 TR TP TY TV TL TD

PTA +1405M +48F +45P 99R 8/19

PTA +8.6PL 3.00SCS +0.4DPR 5.8%DCE

PTA +1.57T +1.78UDC +1.62FLC 99R 8/19

PTA +2442G

T-Gen-AC Drearys Emma-ET

71818796 Very Good-86 VG-MS @ 3-03

2-08 2x 305d 22310 4/2 937 3.8 832

*3rd Dam***Ronelee Outside Dabble-ET** EX-91 2E GMD DOM

5-03 3x 365d 44530 3.6 1612 3.1 1397

Life: 2021d 185730 3.6 6757 3.2 5966

*4th Dam***Ronelee Rudolph Dimple** EX-93 EEEEE 2E DOM

5-08 3x 365d 45290 3.7 1713 3.1 1428

Life: 1582d 164010 3.6 5900 3.2 5284

Generations Epic-ET

CAN 11104016 EX-94 GM 12/14 TR TP TY TV TL TD

PTA +1003M +26F +31P 92R 8/19

PTA +1.78T +1.52UDC +1.64FLC GTPI +2191G

Ronelee Boliver Dreary-ET

139531796 Very Good-86 VG-MS DOM

2-04 2x 365d 27970 3.9 1102 3.5 989

59

BRAVADA DOORSOPEN BENDER-ET

3133791632 Good-78 @ 2-06 TRL TD TL 99%RHA

Born: February 4, 2016

GTPI +2187G +2.19T 8/19

Fresh: May 9, 2019

Milking 76 lbs/day SCC 13

Bred: Aug. 8, 2019 to Kenmore Doc Holliday-ET

314771017 GTPI +2660G 8/19 +1633M +3.56T

Ladys-Manor Doorsopen-ET

3013129323 TR TP TY TV TL TD

PTA +424M +58F +22P 99R 8/19

PTA +4.6PL 2.50SCS -2.2DPR 5.9%DCE

PTA +2.65T +2.67UDC +1.01FLC 98R 8/19

GTPI +2289G

T-Gen-AC Drearys Emma-ET

71818796 Very Good-86 VG-MS @ 3-03

2-08 2x 305d 22310 4/2 937 3.8 832

*3rd Dam***Ronelee Outside Dabble-ET** EX-91 2E GMD DOM

5-03 3x 365d 44530 3.6 1612 3.1 1397

Life: 2021d 185730 3.6 6757 3.2 5966

*4th Dam***Ronelee Rudolph Dimple** EX-93 EEEEE 2E DOM

5-08 3x 365d 45290 3.7 1713 3.1 1428

Life: 1582d 164010 3.6 5900 3.2 5284

Generations Epic-ET

CAN 11104016 EX-94 GM 12/14 TR TP TY TV TL TD

PTA +1003M +26F +31P 92R 8/19

PTA +1.78T +1.52UDC +1.64FLC GTPI +2191G

Ronelee Boliver Dreary-ET

139531796 Very Good-86 VG-MS DOM

2-04 2x 365d 27970 3.9 1102 3.5 989

60

BRAVADA SUPERSHOT EMBER-ET

56629716 Good-77 @ 3-06 TR TL TD 99%RHA-NA

Born: February 5, 2015

GTPI +2235G +1150M 8/19

Fresh: July 2, 2019

Milking 90 lbs/day SCC 23

Bred: Sept. 24, 2019 to Kenmore Jedi Chacellor-ET RC

7H013774 GTPI +2532G +1948M 8/19

Cogent Supershot

NLD 755898903 GM 8/18 TV TL TY TD

PTA +2116M +46F +67P 99R 8/19

PTA +6.2PL 2.63SCS +1.3DPR 3.0%DCE

PTA +1.00T +1.00UDC +.34FLC 99R 8/19

GTPI +2463G

T-Gen-AC Drearys Emma-ET

71818796 Very Good-86 VG-MS @ 3-03

2-08 2x 305d 22310 4/2 937 3.8 832

*3rd Dam***Ronelee Outside Dabble-ET** EX-91 2E GMD DOM

5-03 3x 365d 44530 3.6 1612 3.1 1397

Life: 2021d 185730 3.6 6757 3.2 5966

*4th Dam***Ronelee Rudolph Dimple** EX-93 EEEEE 2E DOM

5-08 3x 365d 45290 3.7 1713 3.1 1428

Life: 1582d 164010 3.6 5900 3.2 5284

Generations Epic-ET

CAN 11104016 EX-94 GM 12/14 TR TP TY TV TL TD

PTA +1003M +26F +31P 92R 8/19

PTA +1.78T +1.52UDC +1.64FLC GTPI +2191G

Ronelee Boliver Dreary-ET

139531796 Very Good-86 VG-MS DOM

2-04 2x 365d 27970 3.9 1102 3.5 989

61

BRAVADA DEARING DABBLE-ET

3137164754 TR TL TD 99%RHA-I

Born: March 20, 2016

GTPI +2410G +1410M 8/19

Fresh: May 17, 2019

Milking 68 lbs/day SCC 13

Bred: Sept. 12, 2019 to Kenmore Doc Holliday-ET

314771017 GTPI +2660G 8/19 +1633M +3.56T

Mr Day Dearing 1445-ET

72128234 GM 8/18 TC TY TV TL TD

PTA +1780M +71F +62P 99R 8/19

PTA +6.1PL 2.98SCS -0.3DPR 4.1%DCE

PTA +1.48T +2.01UDC +.80FLC 96R 8/19

GTPI +2559G

Bravada Oak Emmy-ET

56629667 Good Plus-82 VG-MS @ 2-09

GTPI +2302G +1243M 8/19

2-04 2x 305d 18190 3.9 709 3.4 620

3rd Dam

Ronelee Boliver Dreary-ET VG-86 VG-MS DOM

2-04 2x 365d 27970 3.9 1102 3.5 989

4th Dam

Ronelee Outside Dabble-ET EX-91 2E GMD DOM

5-03 3x 365d 44530 3.6 1612 3.1 1397

Life: 2021d 185730 3.6 6757 3.2 5966

Pine-Tree AltaOak-ET

69169951 TR TP TC TY TV TL TD

PTA +1833M +64F +52P 99R 8/19

PTA +1.18T +.90UDC +.61FLC GTPI +2249G

T-Gen-AC Drearys Emma-ET

71818796 Very Good-86 VG-MS @ 3-03

2-08 2x 305d 22310 4/2 937 3.8 832

62

BRAVADA DEARING DARLA 210-ET

3133791627 Good Plus-82 @ 2-06 TR TL TD 99%RHA

Born February 1, 2016

GTPI +2383G +1748M 8/19

Fresh: March 27, 2019

Milking 72 lbs/day

Bred: June 29, 2019 to Kenmore Doc Holliday-ET

314771017 GTPI +2660G 8/19 +1633M +3.56T

Mr Day Dearing 1445-ET

72128234 GM 8/18 TC TY TV TL TD

PTA +1780M +71F +62P 99R 8/19

PTA +6.1PL 2.98SCS -0.3DPR 4.1%DCE

PTA +1.48T +2.01UDC +.80FLC 96R 8/19

GTPI +2559G

Bravada Oak Emmy-ET

56629667 Good Plus-82 VG-MS @ 2-09

GTPI +2302G +1243M 8/19

2-04 2x 305d 18190 3.9 709 3.4 620

3rd Dam

Ronelee Boliver Dreary-ET VG-86 VG-MS DOM

2-04 2x 365d 27970 3.9 1102 3.5 989

4th Dam

Ronelee Outside Dabble-ET EX-91 2E GMD DOM

5-03 3x 365d 44530 3.6 1612 3.1 1397

Life: 2021d 185730 3.6 6757 3.2 5966

Pine-Tree AltaOak-ET

69169951 TR TP TC TY TV TL TD

PTA +1833M +64F +52P 99R 8/19

PTA +1.18T +.90UDC +.61FLC GTPI +2249G

T-Gen-AC Drearys Emma-ET

71818796 Very Good-86 VG-MS @ 3-03

2-08 2x 305d 22310 4/2 937 3.8 832

63

BRAVADA DEARING EXCITE-ET

3133791630 Good Plus-80 @ 2-06 TR TL TD 99%RHA

Born: February 4, 2016

GTPI +2339G +1257M 8/19

Fresh: April 1, 2019

Milking 70 lbs/day SCC 18

Bred: Aug. 1, 2019 to Kenmore Doc Holliday-ET

314771017 GTPI +2660G 8/19 +1633M +3.56T

Mr Day Dearing 1445-ET

72128234 GM 8/18 TC TY TV TL TD

PTA +1780M +71F +62P 99R 8/19

PTA +6.1PL 2.98SCS -0.3DPR 4.1%DCE

PTA +1.48T +2.01UDC +.80FLC 96R 8/19

GTPI +2559G

Bravada Oak Emmy-ET

56629667 Good Plus-82 VG-MS @ 2-09

GTPI +2302G +1243M 8/19

2-04 2x 305d 18190 3.9 709 3.4 620

3rd Dam

Ronelee Boliver Dreary-ET VG-86 VG-MS DOM

2-04 2x 365d 27970 3.9 1102 3.5 989

4th Dam

Ronelee Outside Dabble-ET EX-91 2E GMD DOM

5-03 3x 365d 44530 3.6 1612 3.1 1397

Life: 2021d 185730 3.6 6757 3.2 5966

Pine-Tree AltaOak-ET

69169951 TR TP TC TY TV TL TD

PTA +1833M +64F +52P 99R 8/19

PTA +1.18T +.90UDC +.61FLC GTPI +2249G

T-Gen-AC Drearys Emma-ET

71818796 Very Good-86 VG-MS @ 3-03

2-08 2x 305d 22310 4/2 937 3.8 832

64

BRAVADA DEARING ESSENCE-ET

3133791629 Good-79 @ 2-06 TR TL TD 99%RHA-I
 Born: February 3, 2016
 GTPI +2440G +1637M +72F 8/19

Fresh: March 1, 2019

Mr Day Dearing 1445-ET

72128234 GM 8/18 TC TY TV TL TD
 PTA +1780M +71F +62P 99R 8/19
 PTA +6.1PL 2.98SCS -0.3DPR 4.1%DCE
 PTA +1.48T +2.01UDC +.80FLC 96R 8/19
 GTPI +2559G

Bravada Oak Emmy-ET

56629667 Good Plus-82 VG-MS @ 2-09
 GTPI +2302G +1243M 8/19
 2-04 2x 305d 18190 3.9 709 3.4 620

3rd Dam

Ronelee Boliver Dreary-ET VG-86 VG-MS DOM
 2-04 2x 365d 27970 3.9 1102 3.5 989

4th Dam

Ronelee Outside Dabble-ET EX-91 2E GMD DOM
 5-03 3x 365d 44530 3.6 1612 3.1 1397
 Life: 2021d 185730 3.6 6757 3.2 5966

Pine-Tree AltaOak-ET

69169951 TR TP TC TY TV TL TD
 PTA +1833M +64F +52P 99R 8/19
 PTA +1.18T +.90UDC +.61FLC GTPI +2249G

T-Gen-AC Drearys Emma-ET

71818796 Very Good-86 VG-MS @ 3-03
 2-08 2x 305d 22310 4/2 937 3.8 832

65

BRAVADA MIDNIGHT MISSION-ET

3143029856 TR TL TD 99%RHA-NA
 Born: June 1, 2016
 GTPI +2308G +1063M 8/19

Fresh: December 2, 2018
 Milking 68 lbs/day SCC 200

Bred: March 24, 2019 to Kenmore Triple Crown-Red-ET
 3143029863

Bacon-Hill Pety Modesty-ET

3013654627 Very Good-86 GM 8/18 TR TP TC TV TY
 PTA +785M +70F +38P 99R 8/19
 PTA +6.9PL 3.27SCS +1.0DPR 2.4%DCE
 PTA +.89T +2.09UDC +1.32FLC 99R 8/19
 GTPI +2464G

Bravada Chevrolet Arlita-ET

56629690 TL TD
 GTPI +2269G 8/19

3rd Dam

Ronelee Boliver Dreary-ET VG-86 VG-MS DOM
 2-04 2x 365d 27970 3.9 1102 3.5 989

4th Dam

Ronelee Outside Dabble-ET EX-91 2E GMD DOM
 5-03 3x 365d 44530 3.6 1612 3.1 1397
 Life: 2021d 185730 3.6 6757 3.2 5966

Vekis Chevrolet-ET

NLD 765206109
 PTA +1510M +46F +42P 99R 8/19
 PTA +.50T +.79UDC +.75FLC GTPI +2169G

T-Gen-AC Drearys Emma-ET

71818796 Very Good-86 VG-MS @ 3-03
 2-08 2x 305d 22310 4/2 937 3.8 832

66

BRAVADA MODESTY ANNIE-ET

3137164771 TR TC TL TD 99%RHA-NA
 Born: May 30, 2016
 GTPI +2192G 8/19

Fresh: December, 2018
 Milking 52 lbs/day SCC 27

Bred: March 24, 2019 to Kenmore Triple Crown-Red-ET
 3143029863

Bacon-Hill Pety Modesty-ET

3013654627 Very Good-86 GM 8/18 TR TP TC TV TY
 PTA +785M +70F +38P 99R 8/19
 PTA +6.9PL 3.27SCS +1.0DPR 2.4%DCE
 PTA +.89T +2.09UDC +1.32FLC 99R 8/19
 GTPI +2464G

Bravada Chevrolet Arlita-ET

56629690 TL TD
 GTPI +2269G 8/19

3rd Dam

Ronelee Boliver Dreary-ET VG-86 VG-MS DOM
 2-04 2x 365d 27970 3.9 1102 3.5 989

4th Dam

Ronelee Outside Dabble-ET EX-91 2E GMD DOM
 5-03 3x 365d 44530 3.6 1612 3.1 1397
 Life: 2021d 185730 3.6 6757 3.2 5966

Vekis Chevrolet-ET

NLD 765206109
 PTA +1510M +46F +42P 99R 8/19
 PTA +.50T +.79UDC +.75FLC GTPI +2169G

T-Gen-AC Drearys Emma-ET

71818796 Very Good-86 VG-MS @ 3-03
 2-08 2x 305d 22310 4/2 937 3.8 832

67

BRAVADA JEDI PRINCESS-ET

3137164760 Good PPlus-80 @ 2-04 TR TC TL 99%RHA

Born: April 17, 2016

GTPI +2350G +1736M 8/19

Dry

Bred to Kenmore Doc Holliday-ET

314771017 GTPI +2660G 8/19 +1633M +3.56T

S-S-I Montross Jedi-ET

3123886035 Excellent-93 GM 8/18 TR TP TC TY TV TL

PTA +2631M +40F +87P 99R 8/19

PTA +6.9PL 2.70SCS +0.6DPR 3.1%DCE

PTA +1.51T +1.68UDC -.36FLC 99R 8/19

GTPI +2554G

Bravada Chevrolet Arlita-ET

56629690 TL TD

GTPI +2269G 8/19

3rd Dam

Ronelee Boliver Dreary-ET VG-86 VG-MS DOM

2-04 2x 365d 27970 3.9 1102 3.5 989

4th Dam

Ronelee Outside Dabble-ET EX-91 2E GMD DOM

5-03 3x 365d 44530 3.6 1612 3.1 1397

Life: 2021d 185730 3.6 6757 3.2 5966

Vekis Chevrolet-ET

NLD 765206109

PTA +1510M +46F +42P 99R 8/19

PTA +.50T +.79UDC +.75FLC GTPI +2169G

T-Gen-AC Drearys Emma-ET

71818796 Very Good-86 VG-MS @ 3-03

2-08 2x 305d 22310 4/2 937 3.8 832

68

BRAVADA JEDI FAITH-ET

3137164762 RC TC TL TD 99%RHA-I

Born: April 2, 2016

GTPI +2509G +2032M +72P 8/19

Dry

Due: Oct. 25, 2019 to Kenmore Triple Crown-Red-ET

3143029863

S-S-I Montross Jedi-ET

3123886035 Excellent-93 GM 8/18 TR TP TC TY TV TL

PTA +2631M +40F +87P 99R 8/19

PTA +6.9PL 2.70SCS +0.6DPR 3.1%DCE

PTA +1.51T +1.68UDC -.36FLC 99R 8/19

GTPI +2554G

Bravada Olympian Escort-ET

56629692 Very Good-89 EVVVE

GTPI +2218G +2.14T 8/19

3rd Dam

Ronelee Boliver Dreary-ET VG-86 VG-MS DOM

2-04 2x 365d 27970 3.9 1102 3.5 989

4th Dam

Ronelee Outside Dabble-ET EX-91 2E GMD DOM

5-03 3x 365d 44530 3.6 1612 3.1 1397

Life: 2021d 185730 3.6 6757 3.2 5966

Ladys-Manor Olympian

71592946 RC TP TY TV TL TD

PTA +599M -13F +26P 99R 8/19

PTA +1.29T +2.61UDC -.13FLC GTPI +2192G

T-Gen-AC Drearys Emma-ET

71818796 Very Good-86 VG-MS @ 3-03

2-08 2x 305d 22310 4/2 937 3.8 832

69

BRAVADA JEDI ELITE-ET

3137164777

Born: July 7, 2016

Fresh: April 7, 2019

Milking 64 lbs/day SCC 38

Bred: July 11, 2019 to Kenmore Doc Holliday-ET

314771017 GTPI +2660G 8/19 +1633M +3.56T

S-S-I Montross Jedi-ET

3123886035 Excellent-93 GM 8/18 TR TP TC TY TV TL

PTA +2631M +40F +87P 99R 8/19

PTA +6.9PL 2.70SCS +0.6DPR 3.1%DCE

PTA +1.51T +1.68UDC -.36FLC 99R 8/19

GTPI +2554G

Bravada Olympian Escort-ET

56629692 Very Good-89 EVVVE

GTPI +2218G +2.14T 8/19

3rd Dam

Ronelee Boliver Dreary-ET VG-86 VG-MS DOM

2-04 2x 365d 27970 3.9 1102 3.5 989

4th Dam

Ronelee Outside Dabble-ET EX-91 2E GMD DOM

5-03 3x 365d 44530 3.6 1612 3.1 1397

Life: 2021d 185730 3.6 6757 3.2 5966

Ladys-Manor Olympian

71592946 RC TP TY TV TL TD

PTA +599M -13F +26P 99R 8/19

PTA +1.29T +2.61UDC -.13FLC GTPI +2192G

T-Gen-AC Drearys Emma-ET

71818796 Very Good-86 VG-MS @ 3-03

2-08 2x 305d 22310 4/2 937 3.8 832

70

BRAVADA JEDI ESTHER-ET

3137164761 TR TC TL TD 99%RHA-I

Born: April 17, 2016

GTPI +2372G +1350M +2.57T +2.18UDC 8/19

Fresh: March 15, 2019

Milking 60 lbs/day SCC 71

Bred: July 28, 2019 to Kenmore Doc Holliday-ET

314771017 GTPI +2660G 8/19 +1633M +3.56T

S-S-I Montross Jedi-ET

3123886035 Excellent-93 GM 8/18 TR TP TC TY TV TL

PTA +2631M +40F +87P 99R 8/19

PTA +6.9PL 2.70SCS +0.6DPR 3.1%DCE

PTA +1.51T +1.68UDC -.36FLC 99R 8/19

GTPI +2554G

Bravada Olympian Escort-ET

56629692 Very Good-89 EVVVE

GTPI +2218G +2.14T 8/19

3rd Dam

Ronelee Boliver Dreary-ET VG-86 VG-MS DOM

2-04 2x 365d 27970 3.9 1102 3.5 989

4th Dam

Ronelee Outside Dabble-ET EX-91 2E GMD DOM

5-03 3x 365d 44530 3.6 1612 3.1 1397

Life: 2021d 185730 3.6 6757 3.2 5966

Ladys-Manor Olympian

71592946 RC TP TY TV TL TD

PTA +599M -13F +26P 99R 8/19

PTA +1.29T +2.61UDC -.13FLC GTPI +2192G

T-Gen-AC Drearys Emma-ET

71818796 Very Good-86 VG-MS @ 3-03

2-08 2x 305d 22310 4/2 937 3.8 832

71

BRAVADA MODESTY ECHO-ET

3137164767 TR TC TL TD

Born: May 26, 2016

GTPI +2285G +2.03UDC 8/19

Fresh: May 7, 2019

Milking 68 lbs/day SCC 50

Short-bred to Kenmore Doc Holliday-ET

314771017 GTPI +2660G 8/19 +1633M +3.56T

Bacon-Hill Pety Modesty-ET

3013654627 Very Good-86 GM 8/18 TR TP TC TV TY

PTA +785M +70F +38P 99R 8/19

PTA +6.9PL 3.27SCS +1.0DPR 2.4%DCE

PTA +.89T +2.09UDC +1.32FLC 99R 8/19

GTPI +2464G

Bravada Olympian Escort-ET

56629692 Very Good-89 EVVVE

GTPI +2218G +2.14T 8/19

3rd Dam

Ronelee Boliver Dreary-ET VG-86 VG-MS DOM

2-04 2x 365d 27970 3.9 1102 3.5 989

4th Dam

Ronelee Outside Dabble-ET EX-91 2E GMD DOM

5-03 3x 365d 44530 3.6 1612 3.1 1397

Life: 2021d 185730 3.6 6757 3.2 5966

Ladys-Manor Olympian

71592946 RC TP TY TV TL TD

PTA +599M -13F +26P 99R 8/19

PTA +1.29T +2.61UDC -.13FLC GTPI +2192G

T-Gen-AC Drearys Emma-ET

71818796 Very Good-86 VG-MS @ 3-03

2-08 2x 305d 22310 4/2 937 3.8 832

72

BRAVADA OLYMPIAN ELLYANN-ET

56629742 Good Plus-83 VG-MS @ 2-10 RC TL TD

Born: August 4, 2014

GTPI +2274G +2.10UDC 8/19

Fresh: June 5, 2019

Milking 76 lbs/day SCC 17

Bred: Sept. 17, 2019 to Kenmore Doc Holliday-ET

314771017 GTPI +2660G 8/19 +1633M +3.56T

Ladys-Manor Man-O-Shan-ET

70528492 Excellent-90 TY TV TL TD

PTA +987M +51F +34P 99R 8/19

PTA +2.9PL 3.03UDC -0.9DPR 4.2%DCE

PTA +1.52T +2.21UDC +.18FLC 99R 8/19

GTPI +2204G

T-Gen-AC Drearys Emma-ET

71818796 Very Good-86 VG-MS @ 3-03

2-08 2x 305d 22310 4/2 937 3.8 832

3rd Dam

Ronelee Outside Dabble-ET EX-91 2E GMD DOM

5-03 3x 365d 44530 3.6 1612 3.1 1397

Life: 2021d 185730 3.6 6757 3.2 5966

4th Dam

Ronelee Rudolph Dimple EX-93 EEEEE 2E DOM

5-08 3x 365d 45290 3.7 1713 3.1 1428

Life: 1582d 164010 3.6 5900 3.2 5284

Generations Epic-ET

CAN 11104016 EX-94 GM 12/14 TR TP TY TV TL TD

PTA +1003M +26F +31P 92R 8/19

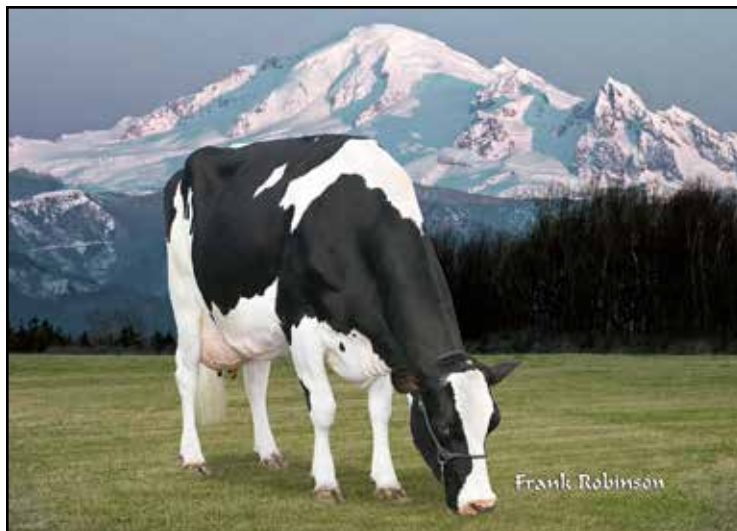
PTA +1.78T +1.52UDC +1.64FLC GTPI +2191G

Ronelee Boliver Dreary-ET

139531796 Very Good-86 VG-MS DOM

2-04 2x 365d 27970 3.9 1102 3.5 989

Kenmore Holsteins Milking Herd Dispersal



RONELEE OUTSIDE DABBLE EX-91 2E GMD DOM
 APPEARS IN PEDIGREES OF LOTS 54 THRU 74

73

BRAVADA AKOYL EVERGREEN-ET

3137164793 RC
 Born: October 23, 2016

Fresh: April 2, 2019
 Milking 68 lbs/day SCC 93

Bred: June 22, 2019 to Kenmore Doc Holliday-ET
 314771017 GTPI +2660G 8/19 +1633M +3.56T

Gen-I-Beq Aky-Red-ET

CAN 108567239 TP TY TV TL TD
 PTA +729M +28F +33P 93R 8/19
 PTA +2.4PL 2.84SCS -0.1DPR 6.0%DCE
 PTA +1.73T +1.48UDC +.66FLC 90R 8/19
 GTPI +2113G

Bravada Olympian Ellyann-ET

56629742 Good Plus-83 VG-MS @ 2-10 RC TL TD
 GTPI +2274G +2.10UDC 8/19
 Sells as Lot 72

3rd Dam

Ronelee Boliver Dreary-ET VG-86 VG-MS DOM
 2-04 2x 365d 27970 3.9 1102 3.5 989

4th Dam

Ronelee Outside Dabble-ET EX-91 2E GMD DOM
 5-03 3x 365d 44530 3.6 1612 3.1 1397
 Life: 2021d 185730 3.6 6757 3.2 5966

Ladys-Manor Olympian

71592946 RC TP TY TV TL TD
 PTA +599M -13F +26P 99R 8/19
 PTA +1.29T +2.61UDC -.13FLC GTPI +2192G

T-Gen-AC Drearys Emma-ET

71818796 Very Good-86 VG-MS @ 3-03
 2-08 2x 305d 22310 4/2 937 3.8 832

74

BRAVADA LOYOLA LAYLA

3137164792 99%RHA-NA
 Born: December 10, 2016

Fresh: May 19, 2019
 Milking 62 lbs/day SCC 18

Bred: Sept. 22, 2019 to Kenmore Doc Holliday-ET
 314771017 GTPI +2660G 8/19 +1633M +3.56T

Zimmerview Wonka Loyola-P

73926711 RC PCPTY TV TL TD
 PTA +1454M +37F +36P 97R 8/19
 PTA +0.1PL 3.05SCS -3.5DPR 4.6%DCE
 PTA +2.45T +2.93UDC +.44FLC 94R 8/19
 GTPI +2093G

Bravada Olympian Ellyann-ET

56629742 Good Plus-83 VG-MS @ 2-10 RC TL TD
 GTPI +2274G +2.10UDC 8/19
 Sells as Lot 72

3rd Dam

Ronelee Boliver Dreary-ET VG-86 VG-MS DOM
 2-04 2x 365d 27970 3.9 1102 3.5 989

4th Dam

Ronelee Outside Dabble-ET EX-91 2E GMD DOM
 5-03 3x 365d 44530 3.6 1612 3.1 1397
 Life: 2021d 185730 3.6 6757 3.2 5966

Ladys-Manor Olympian

71592946 RC TP TY TV TL TD
 PTA +599M -13F +26P 99R 8/19
 PTA +1.29T +2.61UDC -.13FLC GTPI +2192G

T-Gen-AC Drearys Emma-ET

71818796 Very Good-86 VG-MS @ 3-03
 2-08 2x 305d 22310 4/2 937 3.8 832



KENMORE MITEY TONYA P-ET VG-86 RC PO
DAM OF LOTS 75, 76 & 77

75

KENMORE COLT 45 TREAT-ET

56629654 Very Good-86 VG-MS @ 4-08 PO
Born: December 1, 2013

Fresh: June 25, 2019
Milking 88 lbs/day SCC 33

Bred: Sept. 3, 2019 to Kenmore Doc Holliday-ET
314771017 GTPI +2660G 8/19 +1633M +3.56T

Sandy-Valley Colt P-Red-TW

68731810 PC TY TV TL TD
PTA +454M -38F +10P 99R 8/19
PTA +.18T +1.15UDC +.00FLC GTPI +1762G

Regancrest S Chassity-ET

62496899 Excellent-92 EEEVE GMD DOM TL TY
3-10 2x 365d 42280 4.3 1798 2.5 1070
Life: 1071d 105520 5.2 4383 2.8 2959

West Port Arron Doon Mitey P

CAN 8930027 GP-82-CAN RC PC TY TV TL
PTA -365M +20F +3P 99R 8/19
PTA +.90T +.16UDC +1.11FLC GTPI +1695G

WD-Homeplace Oman Tatiana

137432233 Very Good-88 EX-MS RC TV TL
5-01 2x 305d 28660 3.7 1060 2.9 832
3-03 2x 305d 25710 4.2 1072 3.2 827
2-00 2x 305d 19220 4.1 779 3.2 608
Life: 1379d 104680 4.1 4250 3.2 3339

Mr Chassity Colt 45-ET

70476906 RC PC TY TV TL
PTA +369M -18F -4P 98R 8/19
PTA +1.1PL 2.96SCS -1.6DPR 5.5%DCE
PTA +1.14T +2.47UDC +.38FLC 97R 8/19
GTPI +1783G

Kenmore Mitey Tonya P-ET

141169778 Very Good-86 VG-MS @ 2-05 RC PO
1-11 2x 305d 20350 4.3 881 3.0 613

3rd Dam

Fritzland SS Tiara-Red-ET VG-85 VG-MS
3-06 2x 365d 30690 4.1 1251 3.1 937
Life: 1628d 109060 4.1 4452 3.1 3392

4th Dam

Klattview Atreyu Tiara EX-93 5E DOM *RC
8-06 2x 365d 36900 4.4 1640 3.0 1104
Life: 3754d 277940 3.8 10636 2.9 8016

5th Dam

Klattview Concord Tara-Red VG-87 VG-MS
3-05 3x 365d 32800 4.1 1360 3.3 1094

6th Dam

Klattview Enhancer Tara-Red-ET GP-83 VG-MS
2-01 2x 344d 18630 4.7 879 3.6 670

7th Dam

Klattview TT Sarah-Red VG-85
3-03 2x 365d 17990 3.8 690 3.5 629

8th Dam

Klattview TT Terra EX-90 VEVE
4-08 2x 350d 24890 4.7 1180 3.3 830
Life: 1953d 121720 4.3 5243 3.5 4233

9th Dam

Terra-Verdi Shirley Chief VG-85
4-07 2x 328d 20410 4.1 842 3.5 710
Life: 2128d 134490 4.2 5596 3.4 3216

76

KENMORE OHARE TIPSYP P-ET

56629745 Good Plus-80 @ 2-11 PO
Born: July 15, 2014

Due: Oct. 12, 2019 to Kenmore Avance-Red-ET
3143029864 - 202H001718

Pine-Tree Ohare-P-ET

71178706 PC TY TV TL TD
PTA +1341M -2F +23P 99R 8/19
PTA +3.7PL 3.03SCS -0.1DPR 5.9%DCE
PTA +.44T +1.12UDC +.41FLC 97R 81/9
GTPI +1866G

Kenmore Mitey Tonya P-ET

141169778 Very Good-86 VG-MS @ 2-05 RC PO
1-11 2x 305d 20350 4.3 881 3.0 613

3rd Dam

Fritzland SS Tiara-Red-ET VG-85 VG-MS
3-06 2x 365d 30690 4.1 1251 3.1 937
Life: 1628d 109060 4.1 4452 3.1 3392

4th Dam

Klattview Atreyu Tiara EX-93 5E DOM *RC
8-06 2x 365d 36900 4.4 1640 3.0 1104
Life: 3754d 277940 3.8 10636 2.9 8016

West Port Arron Doon Mitey P

CAN 8930027 GP-82-CAN RC PC TY TV TL
PTA -365M +20F +3P 99R 8/19
PTA +.90T +.16UDC +1.11FLC GTPI +1695G

WD-Homeplace Oman Tatiana

137432233 Very Good-88 EX-MS RC TV TL
5-01 2x 305d 28660 3.7 1060 2.9 832
3-03 2x 305d 25710 4.2 1072 3.2 827
Life: 1379d 104680 4.1 4250 3.2 3339

77

KENMORE COLT 45 TAYA-RED-ET

56629653 Good-79 @ 2-11 PO TL TD
Born: December 1, 2013
GTPI +1805G 8/19

3-06 2x 305d 21080 4.2 882 3.1 657
2-00 2x 305d 13560 4.4 592 3.3 446

Due: Oct. 2, 2019 to Kenmore Avance-Red-ET
3143029864 - 202H001718

Mr Chassity Colt 45-ET

70476906 RC PC TY TV TL
PTA +369M -18F -4P 98R 8/19
PTA +1.1PL 2.96SCS -1.6DPR 5.5%DCE
PTA +1.14T +2.47UDC +.38FLC 97R 8/19
GTPI +1783G

Kenmore Mitey Tonya P-ET

141169778 Very Good-86 VG-MS @ 2-05 RC PO
1-11 2x 305d 20350 4.3 881 3.0 613

3rd Dam

Fritzland SS Tiara-Red-ET VG-85 VG-MS
3-06 2x 365d 30690 4.1 1251 3.1 937
Life: 1628d 109060 4.1 4452 3.1 3392

4th Dam

Klattview Atreyu Tiara EX-93 5E DOM *RC
8-06 2x 365d 36900 4.4 1640 3.0 1104
Life: 3754d 277940 3.8 10636 2.9 8016

West Port Arron Doon Mitey P

CAN 8930027 GP-82-CAN RC PC TY TV TL
PTA -365M +20F +3P 99R 8/19
PTA +.90T +.16UDC +1.11FLC GTPI +1695G

WD-Homeplace Oman Tatiana

137432233 Very Good-88 EX-MS RC TV TL
5-01 2x 305d 28660 3.7 1060 2.9 832
3-03 2x 305d 25710 4.2 1072 3.2 827
Life: 1379d 104680 4.1 4250 3.2 3339

78

LARBUCKS TSA PAT DOWN-RED

3143029869 99%RHA-NA
Born: June 25, 2017

Fresh: August 15, 2019
Milking 72 lbs/day SCC 93

Coyne-Farms Sympati Pat-Red

3012178104 TP TC TY TV TL TD
PTA +1202M +66F +51P 99R 8/19
PTA +4.5PL 2.77SCS +0.0DPR 6.0%DCE
PTA +1.72T +2.38UDC +1.55FLC 97R 8/19
GTPI +2509G

Kenmore Colt 45 Taya-Red-ET

56629653 Good-79 @ 2-11 PO TL TD
3-06 2x 305d 21080 4.2 882 3.1 657
2-00 2x 305d 13560 4.4 592 3.3 446
Sells as Lot 77

3rd Dam

WD-Homeplace Oman Tatiana VG-88 EX-MS RC
5-01 2x 305d 28660 3.7 1060 2.9 832
Life: 1379d 104680 4.1 4250 3.2 3339

4th Dam

Fritzland SS Tiara-Red-ET VG-85 VG-MS
3-06 2x 365d 30690 4.1 1251 3.1 937
Life: 1628d 109060 4.1 4452 3.1 3392

Mr Chassity Colt 45-ET

70476906 RC PC TY TV TL
PTA +369M -18F -4P 98R 8/19
PTA +1.14T +2.47UDC +.38FLC GTPI +1783G

Kenmore Mitey Tonya P-ET

141169778 Very Good-86 VG-MS @ 2-05 RC PO
1-11 2x 305d 20350 4.3 881 3.0 613



WD-HOMEPLACE OMAN TATIANA VG-88 RC
APPEARS IN PEDIGREES OF LOTS 75 THRU 83

79

KENMORE TALLADEGA

56629708 Good Plus-83 VG-MS @ 3-01
Born: May 20, 2014

Dry

Due: Nov. 24, 2019 to Kenmore Avance-Red-ET
3143029864 - 202H001718

Gen-I-Beq Aikman-ET

CAN 106807394 VG-86-CAN RC TP TY TV TL TD
PTA +276M +64F +33P 99R 8/19
PTA +1.3PL 2.80SCS +0.1DPR 7.2%DCE
PTA +.76T +1.18UDC +.92FLC 98R 8/19
GTPI +2222G

Kenmore Hero Tatiana-ET

142016989 Very Good-85 VG-MS @ 2-07 RC TL TD

3rd Dam

Fritzland SS Tiara-Red-ET VG-85 VG-MS
3-06 2x 365d 30690 4.1 1251 3.1 937
Life: 1628d 109060 4.1 4452 3.1 3392

4th Dam

Klattview Atreyu Tiara EX-93 5E DOM *RC
8-06 2x 365d 36900 4.4 1640 3.0 1104
Life: 3754d 277940 3.8 10636 2.9 8016

Siemers Toys Hero 9701-ET

62663985 Excellent-92 GM 8/12 TR TY TV TL TD
PTA -75M +47F +0P 99R 8/19
PTA +2.62T +2.93UDC +1.52FLC GTPI+2018G

WD-Homeplace Oman Tatiana

137432233 Very Good-88 EX-MS RC TV TL
5-01 2x 305d 28660 3.7 1060 2.9 832
3-03 2x 305d 25710 4.2 1072 3.2 827
Life: 1379d 104680 4.1 4250 3.2 3339

80

KENMORE SHOWTIME ZIP 154

3130321008 RC
Born: March 30, 2015

Due: Oct. 1, 2019 to Kenmore Triple Crown-Red-ET
3143029863

Kenmore Showtime-ET

56629586 RC TY TL TD
PTA +728M +35F +36P 94R 81/9
PTA +5.0PL 2.84SCS +1.7DPR 6.0%DCE
PTA +1.38T +1.12UDC +.21FLC 86R 8/19
GTPI +2252G

Kenmore Axion Zipper-Red-ET

141396475

3rd Dam

Fritzland SS Tiara-Red-ET VG-85 VG-MS
3-06 2x 365d 30690 4.1 1251 3.1 937
Life: 1628d 109060 4.1 4452 3.1 3392

4th Dam

Klattview Atreyu Tiara EX-93 5E DOM *RC
8-06 2x 365d 36900 4.4 1640 3.0 1104
Life: 3754d 277940 3.8 10636 2.9 8016

KHW Axion-Red-ET

137056628 TV
PTA +7M +16F +22P 97R 8/19
PTA -.26T -.88UDC +.88FLC GTPI +1776G

WD-Homeplace Oman Tatiana

137432233 Very Good-88 EX-MS RC TV TL
5-01 2x 305d 28660 3.7 1060 2.9 832
3-03 2x 305d 25710 4.2 1072 3.2 827
Life: 1379d 104680 4.1 4250 3.2 3339

81

KENMORE ARMANI TRICK-RED

3143029846
Born: March 1, 2017

Fresh: July 20, 2019
Milking 50 lbs/day SCC 47

Mr Apples Armani-ET

68571374 Excellent-90 RC CD TP TY TV TL TD
PTA -1413M +32F -2P 99R 8/19
PTA -0.8PL 2.75SCS +1.6DPR 5.2%DCE
PTA +1.70T +2.57UDC +2.05FLC 99R 8/19
GTPI +2083G

Kenmore Olympian Ola P-ET

56629743 Good Plus-81 @ 2-11 PO TL TD

3rd Dam

WD-Homeplace Oman Tatiana VG-88 EX-MS RC

5-01 2x 305d 28660 3.7 1060 2.9 832
Life: 1379d 104680 4.1 4250 3.2 3339

4th Dam

Fritzland SS Tiara-Red-ET VG-85 VG-MS

3-06 2x 365d 30690 4.1 1251 3.1 937
Life: 1628d 109060 4.1 4452 3.1 3392

Ladys-Manor Olympian

71592946 RC TP TY TV TL TD
PTA +599M -13F +26P 99R 8/19
PTA +1.29T +2.61UDC -.13FLC GTPI +2192G

Kenmore Mitey Trix P-Red-ET

141237420 Very Good-89 EX-MS @ 4-06 PO
3-10 2x 302d 27180 4.3 1165 3.0 827
2-02 2x 305d 24740 4.0 1000 3.1 777

82

KENMORE HEINZ HAPPY-TW

3137164789 99%RHA-I
Born: October 18, 2016

Fresh: April 10, 2019
Milking 56 lbs/day SCC 33

Bred: July 5, 2019 to Kenmore Doc Holliday-ET
314771017 GTPI +2660G 8/19 +1633M +3.56T

De-Su Heinz 12342-ET

72851885 Excellent-90 TR BY TP TV TL TD
PTA +630M +15F +20P 99R 8/19
PTA +5.9PL 2.56SCS +4.0DPR 3.2%DCE
PTA +1.35T +2.27UDC +.62FLC 97R 8/19
GTPI +2325G

Kenmore Albany-ET

142096211 Very Good-86 VG-MS @ 4-10 TL TD

3rd Dam

Kenmore Lawnboy Tiara-Red VG-85 VG-MS

2-05 2x 305d 27410 3.6 999 3.1 860

4th Dam

WD-Homeplace Oman Tatiana VG-88 EX-MS RC

5-01 2x 305d 28660 3.7 1060 2.9 832
Life: 1379d 104680 4.1 4250 3.2 3339

Hunsberger Alchemy-ET

69080973 RC TY TV TL TD
PTA +403M +5F +23P 99R 8/19
PTA +1.12T +1.57UDC -.94FLC GTPI +2055G

Kenmore Super Tamara

140987500 Very Good-86 VVVVV RC
4-11 2x 365d 36890 3.5 1301 3.0 1094
3-06 2x 305d 22870 3.4 786 3.0 686
7-03 2x 286d 25500 3.9 1000 3.1 801
Life: 2062d 157260 3.7 5745 3.0 4782

83

KENMORE HEINZ HONEY-TW

3137164790 99%RHA-I
Born: October 18, 2016

Fresh: March 26, 2019

Bred: July 21, 2019 to Kenmore Doc Holliday-ET
314771017 GTPI +2660G 8/19 +1633M +3.56T

De-Su Heinz 12342-ET

72851885 Excellent-90 TR BY TP TV TL TD
PTA +630M +15F +20P 99R 8/19
PTA +5.9PL 2.56SCS +4.0DPR 3.2%DCE
PTA +1.35T +2.27UDC +.62FLC 97R 8/19
GTPI +2325G

Kenmore Albany-ET

142096211 Very Good-86 VG-MS @ 4-10 TL TD

3rd Dam

Kenmore Lawnboy Tiara-Red VG-85 VG-MS

2-05 2x 305d 27410 3.6 999 3.1 860

4th Dam

WD-Homeplace Oman Tatiana VG-88 EX-MS RC

5-01 2x 305d 28660 3.7 1060 2.9 832
Life: 1379d 104680 4.1 4250 3.2 3339

Hunsberger Alchemy-ET

69080973 RC TY TV TL TD
PTA +403M +5F +23P 99R 8/19
PTA +1.12T +1.57UDC -.94FLC GTPI +2055G

Kenmore Super Tamara

140987500 Very Good-86 VVVVV RC
4-11 2x 365d 36890 3.5 1301 3.0 1094
3-06 2x 305d 22870 3.4 786 3.0 686
7-03 2x 286d 25500 3.9 1000 3.1 801
Life: 2062d 157260 3.7 5745 3.0 4782



BREMER ACTIVE CHARM-ET VG-86
2ND DAM OF LOTS 84, 85 & 87

84

LARBUCKS COCO-ET

56629685 TL TD 99%RHA-NA
Born: April 26, 2014
GTPI +2040G 8/19

Fresh: June 4, 2019
Milking 82 lbs/day SCC 17

Vekis Chevrolet-ET

NLD 765206109
PTA +1510M +46F +42P 99R 8/19
PTA +2.5PL 2.73SCS -1.0DPR 4.6%DCE
PTA +.50T +.79UDC +.75FLC 98R 8/19
GTPI +2169G

Bremer Sudan Carmel-ET

71259651 Very Good-85 VG-MS @ 3-07
2-03 2x 305d 22110 4.1 902 3.1 684
3-05 2x 305d 20350 4.1 829 3.5 717

Badger-Bluff Fanny Freddie

60996956 GM 12/14 TP TC TY TV TL TD
PTA +714 M +26F +23P 99R 8/19
PTA +.22T +.59UDC +1.25FLC 99R GTPI+2073G

Larcrest Chenoa-ET

56264510 Very Good-87 VVVVV DOM
2-04 2x 365d 35930 4.1 1487 3.5 1259

VA-Early-Dawn Sudan CRI-ET

62768990 TP TC TY TV TL TD
PTA +1003M +74F +45P 99R 8/19
PTA +.79T -.06UDC +1.12FLC GTPI +2102G

Bremer Active Charm-ET

66088957 Very Good-86 VG-MS @ 2-06 TV TL
2-01 2x 365d 24760 4.7 1163 3.5 870

3rd Dam

Solid-Gold Cheesecake-ET VG-88 EX-MS DOM
5-07 2x 365d 40300 4.6 1854 3.4 1384
Life: 1476d 136230 4.3 5804 3.4 4628

4th Dam

Ms Solid-Gold Rud Cherry-ET VG-89 EVVVE
2-04 3x 365d 40010 3.5 1382 2.8 1126
Life: 1499d 124090 3.7 4532 3.0 3673

5th Dam

Whiteleather Conquest 385 EX-93 EEEEE DOM
4-01 3x 365d 36200 3.9 1398 3.0 1100
Life: 1087d 101916 3.5 3586 3.0 3036

6th Dam

Whiteleather Rex SWD Val 2079 EX-91 EEEEE 2E
6-00 2x 365d 30400 4.8 1470 3.0 924
Life: 2130d 133480 4.2 5548 3.2 4246

85

LARBUCKS WILLPOWER CHARM

56629686 Good Plus-80 @ 4-02 TL TD
Born: June 1, 2014
GTPI +2126G 8/19

Fresh: November 20, 2018
Milking 54 lbs/day SCC 29

Bred: March 13, 2019 to Kenmore Triple Crown-Red-ET
3143029863

Generations Willpower-ET

CAN 11347884 VG-87-CAN TV TL
PTA +412M +27F +43P 98R 8/19
PTA +1.8PL 3.25SCS +0.0DPR 7.2%DCE
PTA +.96T +1.24UDC -.65FLC 96R 8/19
GTPI +2057G

Bremer Sudan Carmel-ET

71259651 Very Good-85 VG-MS @ 3-07
2-03 2x 305d 22110 4.1 902 3.1 684
3-05 2x 305d 20350 4.1 829 3.5 717

3rd Dam

Solid-Gold Cheesecake-ET VG-88 EX-MS DOM
5-07 2x 365d 40300 4.6 1854 3.4 1384
Life: 1476d 136230 4.3 5804 3.4 4628

4th Dam

Ms Solid-Gold Rud Cherry-ET VG-89 EVVVE
2-04 3x 365d 40010 3.5 1382 2.8 1126
Life: 1499d 124090 3.7 4532 3.0 3673

VA-Early-Dawn Sudan CRI-ET

62768990 TP TC TY TV TL TD
PTA +1003M +74F +45P 99R 8/19
PTA +.79T -.06UDC +1.12FLC GTPI +2102G

Bremer Active Charm-ET

66088957 Very Good-86 VG-MS @ 2-06 TV TL
2-01 2x 365d 24760 4.7 1163 3.5 870

86

LARBUCKS HT STARPOWER

3137164773
Born: June 29, 2016

Fresh: March 7, 2019
Milking 60 lbs/day SCC 23

Bred: June 23, 2019 to Kenmore Doc Holliday-ET
314771017 GTPI +2660G 8/19 +1633M +3.56T

Cookiecutter Hang-Time-ET

3013614200 Very Good-87 TR TP TY TV TL TD
PTA +836M +68F +46P 99R 8/19
PTA +3.7PL 3.13SCS +0.7DPR 3.9%DCE
PTA +2.42T +2.86UDC +.29FLC 96R 8/19
GTPI +2437G

Larbucks Willpower Charm

56629686 Good Plus-80 @ 4-02 TL TD
Sells as Lot 85

3rd Dam

Bremer Active Charm-ET VG-86 VG-MS TV TL
2-01 2x 365d 24760 4.7 1163 3.5 870

4th Dam

Solid-Gold Cheesecake-ET VG-88 EX-MS DOM
5-07 2x 365d 40300 4.6 1854 3.4 1384
Life: 1476d 136230 4.3 5804 3.4 4628

Generations Willpower-ET

CAN 11347884 VG-87-CAN TV TL
PTA +412M +27F +43P 98R 8/19
PTA +.96T +1.24UDC -.65FLC GTPI +2057G

Bremer Sudan Carmel-ET

71259651 Very Good-85 VG-MS @ 3-07
2-03 2x 305d 22110 4.1 902 3.1 684
3-05 2x 305d 20350 4.1 829 3.5 717

87

LARBUCKS DISTILLER CHEYSA

3137164750 Good Plus-80 @ 3-00 TR TL TD
Born: August 1, 2015
GTPI +2096G 8/19

Fresh: February 12, 2016
Milking 54 lbs/day SCC 44

Bred: June 6, 2019 to Kenmore Doc Holliday-ET
314771017 GTPI +2660G 8/19 +1633M +3.56T

Kings-Ransom M Distiller-ET

72036990 TY TV TL TD
PTA +258M +29F +13P 98R 8/19
PTA +6.1PL 2.67SCS +1.2DPR 5.0%DCE
PTA +.94T +1.57UDC +1.65FLC 94R 8/19
GTPI +2177G

Bremer Sudan Carmel-ET

71259651 Very Good-85 VG-MS @ 3-07
2-03 2x 305d 22110 4.1 902 3.1 684
3-05 2x 305d 20350 4.1 829 3.5 717

3rd Dam

Solid-Gold Cheesecake-ET VG-88 EX-MS DOM
5-07 2x 365d 40300 4.6 1854 3.4 1384
Life: 1476d 136230 4.3 5804 3.4 4628

4th Dam

Ms Solid-Gold Rud Cherry-ET VG-89 EVVVE
2-04 3x 365d 40010 3.5 1382 2.8 1126
Life: 1499d 124090 3.7 4532 3.0 3673

VA-Early-Dawn Sudan CRI-ET

62768990 TP TC TY TV TL TD
PTA +1003M +74F +45P 99R 8/19
PTA +.79T -.06UDC +1.12FLC GTPI +2102G

Bremer Active Charm-ET

66088957 Very Good-86 VG-MS @ 2-06 TV TL
2-01 2x 365d 24760 4.7 1163 3.5 870

88

BRAVADA DAMARIS APRICOT-ET

3133791602 Very Good-85 VG-MS 2 2-11
Born: September 13, 2015
GTPI +2298G +1209M +2.00UDC 8/19

Fresh: March 27, 2019
Milking 82 lbs/day SCC 41

Bred: June 30, 2019 to Kenmore Doc Holliday-ET
314771017 GTPI +2660G 8/19 +1633M +3.56T

Sandy-Valley Sterling-ET

69701759 Excellent-90 TR TP TY TV TL TD
PTA +1881M +49F +59P 99R 8/19
PTA +1.90T +1.18UDC +1.34FLC GTPI +2346G

S-S-I Bookem Damaris 7288-ET

3008328686 Very Good-87 VG-MS DOM
3-11 3x 365d 39660 4.0 1576 3.1 1241
Life: 1522d 146160 3.7 5463 3.3 4808

Mountfield Msy Maurice-ET

69398748 TR TY TV TL TD
PTA +572M +67F +38P 99R 8/19
PTA +.02T +1.09UDC +.78FLC GTPI +2382G

Cool-Lawn Richman 3112B-ET

70505105 Very Good-87 VG-MS DOM
5-00 2x 305d 22140 3.9 873 3.3 730

S-S-I Sterling Damaris-ET

3011538150 TR TP TY TV TL TD
PTA +1405M +48F +45P 99R 8/19
PTA +8.6PL 3.00SCS +0.4DPR 5.8%DCE
PTA +1.57T +1.78UDC +1.62FLC 99R 8/19
PTA +2442G

Bravada Acronym-ET

56629636 TL TD

3rd thru 13th Dams

Cool-Lawn Toystory 1915B-ET VG-87 EX-MS DOM
2-02 3x 305d 24290 4.4 1057 3.4 831
Ladys-Manor Amber-ET VG-88 VEVEE DOM
2-03 2x 365d 37310 4.9 1854 3.2 1139
Ladys-Manor Autumn-ET VG-89 EEVVE GMD DOM
2-03 2x 365d 35850 4.1 1476 3.4 1219
Ladys-Manor Toree-ET VG-86 VG-MS GMD DOM
2-02 2x 365d 31610 4.2 1343 3.1 985
Ladys-Manor Temptam-ET EX-90 2E GMD DOM
3-11 2x 365d 35420 4.5 1594 3.3 1173
Life: 1713d 123810 4.5 5592 3.5 4357
Ladys-Manor Temptress Am-ET VG-89 GMD
8-05 2x 365d 32100 4.5 1438 3.1 992
Ladys-Manor Temptress Jem EX-91 GMD
3-02 2x 365d 34450 4.7 1602 3.1 1051
Ladys-Manor Top Gun Gemini-ET EX-93 3E GMD
3-11 2x 365d 36080 3.5 1246 3.1 1106
Life: 2089d 150300 3.8 5699 3.0 4495
Ladys-Manor Delightful Jem VG-88 GMD
6-02 2x 365d 31890 4.1 1314 2.9 933
Life: 1940d 147650 4.0 5946 3.0 4415
Ladys-Manor Donnas Delight VG-85
8-09 2x 365d 30780 3.7 1141 3.0 911
Life: 2392d 166610 3.7 6114
Ladys-Manor Nancy Archie EX-90 2E GMD
Life: 2647d 156000 3.7 5834

89

BRAVADA DELTA AMBER

3130321019 Good Plus-82 @ 3-03 TR TL TD
Born: May 13, 2015
GTPI +2378G +1528M +2.03T 8/19

Fresh: June 10, 2019
Milking 78 lbs/day SCC 303

Bred: Sept. 12, 2019 to Kenmore Doc Holliday-ET
314771017 GTPI +2660G 8/19 +1633M +3.56T

Mountfield SSI Dcy Mogul-ET

3006972816 EX-93 GM 8/15 TR TP TC TY TL TD
PTA +1086M +71F +36P 99R 8/19
PTA +2.19T +3.13UDC +2.01FLC GTPI +2335G

Miss OCD Robst Delicious-ET

3006989479 Very Good-87 GMD DOM
2-05 2x 365d 33780 3.3 1121 3.3 1111

Zani Bolton Mascalse-ET

ITA 17990516801 TY TV TL
PTA +1128M +28F +38P 98R 8/19
PTA +1.33T +.59UDC -.53FLC GTPI +1892G

Cool-Lawn Richman 3112B-ET

70505105 Very Good-87 VG-MS DOM
5-00 2x 305d 22140 3.9 873 3.3 730

Mr Mogul Delta 1427-ET

72128216 GM 8/19 TR TC TY TV TL TD
PTA +1613M +88F +54P 99R 8/19
PTA +7.4PL 2.90SCS +0.4DPR 4.2%DCE
PTA +2.12T +2.82UDC +1.48FLC 99R 8/19
GTPI +2698G

Bravada Arlene-ET

56629635 Good Plus-82 @ 3-06 TL TD
GTPI +2025G +1040M 8/19

3rd thru 13th Dams

Cool-Lawn Toystory 1915B-ET VG-87 EX-MS DOM
2-02 3x 305d 24290 4.4 1057 3.4 831
Ladys-Manor Amber-ET VG-88 VEVEE DOM
2-03 2x 365d 37310 4.9 1854 3.2 1139
Ladys-Manor Autumn-ET VG-89 EEVVE GMD DOM
2-03 2x 365d 35850 4.1 1476 3.4 1219
Ladys-Manor Toree-ET VG-86 VG-MS GMD DOM
2-02 2x 365d 31610 4.2 1343 3.1 985
Ladys-Manor Temptam-ET EX-90 2E GMD DOM
3-11 2x 365d 35420 4.5 1594 3.3 1173
Life: 1713d 123810 4.5 5592 3.5 4357
Ladys-Manor Temptress Am-ET VG-89 GMD
8-05 2x 365d 32100 4.5 1438 3.1 992
Ladys-Manor Temptress Jem EX-91 GMD
3-02 2x 365d 34450 4.7 1602 3.1 1051
Ladys-Manor Top Gun Gemini-ET EX-93 3E GMD
3-11 2x 365d 36080 3.5 1246 3.1 1106
Life: 2089d 150300 3.8 5699 3.0 4495
Ladys-Manor Delightful Jem VG-88 GMD
6-02 2x 365d 31890 4.1 1314 2.9 933
Life: 1940d 147650 4.0 5946 3.0 4415
Ladys-Manor Donnas Delight VG-85
8-09 2x 365d 30780 3.7 1141 3.0 911
Life: 2392d 166610 3.7 6114
Ladys-Manor Nancy Archie EX-90 2E GMD
Life: 2647d 156000 3.7 5834

90

KENMORE PAT PRISTINE-RED

3143029877 99%RHA-NA
Born: July 10, 2017

Fresh: September 22, 2019

Coyne-Farms Sympati Pat-Red

3012178104 TP TC TY TV TL TD
PTA +1202M +66F +51P 99R 8/19
PTA +4.5PL 2.77SCS +0.0DPR 6.0%DCE
PTA +1.72T +2.38UDC +1.55FLC 97R 8/19
GTPI +2509G

Larbucks Trak Prayer-Red-TW

3137164751 Good Plus-84 VG-MS @ 3-08

Dymentholm S Sympatico-ET

CAN 11004723 VG-87-CAN RC TP TY TV TL TD
PTA +1476M +61F +36P 99R 8/19
PTA +1.66T +1.87UDC +1.47FLC GTPI +2329G

Butlerview Colt Prairie-ET

71016158 Very Good-86 VG-MS DOM RC TY
1-11 3x 365d 30230 3.8 1144 3.3 1001

Kenmore Alchemy Trak-Red-ET

142096181 TY TV TL
PTA -18M +14F +10P 96R 8/19
PTA +1.88T +1.57UDC -.28FLC GTPI +1957C

Lights-Out Richman Pristine

141392408 Very Good-86 VG-MS @ 3-08
4-06 2x 350d 37510 3.0 1144 3.2 1201
5-09 2x 200d 25220 3.3 827 3.0 759
3-05 2x 305d 23590 3.6 860 3.0 699
Life: 1360d 111890 3.4 3846 3.1 3473

3rd thru 11th Dams

Jo-Clar-T Advent Poppy-ET GP-81 RC
2-01 2x 305d 22050 3.3 736 2.8 623

Jo-Clar Sept Storm Page-ET EX-90 EEVEE RC
4-08 2x 365d 31350 4.1 1286 3.5 1086

Any-Day Rubens Poppy-ET EX-90 GMD DOM *RC
4-02 2x 365d 40261 4.6 1869 3.5 1412
Life: 1288d 114403 4.5 5097 3.5 3985

Jo-Clar Jess Patsy EX-93 2E DOM
3-06 2x 277d 25720 5.0 1277 3.5 910
Life: 1497d 107460 4.7 5093 3.6 3890

• Res Jr All-American Sr 3-Yr-Old Cow 1998

Jo-Clar Lincoln Patches EX-90 EEEEE
7-08 2x 365d 32060 4.2 1361 3.5 1127
Life: 2224d 179640 4.2 7485 3.4 6141

Jo-Clar Inspiration Penelope EX-90 2E
5-09 2x 365d 27590 3.7 1026 3.4 937
Life: 1644d 123180 4.0 4902 3.4 4135

Jo-Clar Mattador Pixie EX-90 GMD DOM
6-11 2x 365d 36140 3.3 1191 2.8 1015
Life: 2872d 249150 3.2 8081 3.0 7575

Jo-Clar Bell Patsy VG-86 EX-MS
5-05 2x 316d 27670 3.9 1076 3.2 877

Jo-Clar Marvex Pauline VG-87
4-05 2x 301d 21690 4.1 889 3.3 720

91

KENMORE ROYAL QUEEN P

56629705 Good-78 @ 2-06 PO
Born: December 1, 2014

Fresh: June 15, 2019
Milking 76 lbs/day SCC 19

Bred: Aug. 1, 2019 to Kenmore Doc Holliday-ET-ET
314771017 GTPI +2660G 8/19 +1633M +3.56T

Tiger-Lily Ladd P-Red-ET

69405976 Excellent-91 RC PC TY TV TL TD
PTA -948M +4F +2 99R 8/19
PTA +2.11T +1.78UDC +1.03FLC GTPI +2038G

Palmyra M-O-M Manhattan-ET

68681114 Very Good-85 VG-MS RC TV TL
2-04 2x 365d 32440 4.2 1377 3.3 1063

Ralma Gold Crown-ET

52774524 Excellent-91 GM 12/11 TR CD TY TV TL TD
PTA +214M +23F +23P 99R 8/19
PTA +.52T -.34UDC +.41FLC GTPI +1870G

Kenmore Pronto Breezy

139630918 Good-79 @ 4-06
2-01 2x 300d 17970 3.2 580 3.0 544

Palmyra Ladd Man-P-ET

71506037 RC PC TY TV TL TD
PTA +358M +4F +26P 98R 8/19
PTA +4.7PL 2.93SCS +2.6DPR 6.5%DCE
PTA +1.34T +2.28UDC +.88FLC 96R 8/18
GTPI +2180G

Kenmore Crowned Queen

141733010 Good Plus-80 @ 3-03
2-11 2x 264d 15440 3.8 588 3.3 517
2-00 2x 305d 15250 3.5 537 3.2 485

3rd Dam

Kenmore Marshall Bonnie VG-87 VVVVV
4-11 2x 291d 22930 3.9 902 3.2 730
Life: 2065d 136620 3.8 5213 3.2 4310

4th Dam

Kenmore Hardtac Bunny VG-86 VG-MS
9-01 2x 305d 23290 3.6 829 3.0 692
Life: 2549d 163580 3.9 6393 3.2 5211

5th Dam

Kenmore Pam-ET VG-86 VG-MS
6-05 3x 305d 23700 3.5 841 3.0 704
Life: 1755d 102650 3.7 3733 3.1 3201

6th Dam

Lylehaven Trad Pamela-Twin EX-93 3E DOM
5-00 2x 365d 29700 3.9 1151 3.2 951
Life: 2356d 159670 3.9 6288 3.1 4958

7th Dam

Cowherd Sampler Astro Polly EX-91 GMD DOM
4-04 2x 365d 25320 4.1 1027 3.2 805
Life: 1984d 124890 4.0 4986 3.2 3311

8th Dam

Cowherd Fury Sampler Doreen VG-86 VG-MS
7-05 2x 328d 19980 4.1 824
Life: 2530d 118500 4.2 5024

Cowherd Royal Sampler Doris VG-87 VG-MS
4-06 2x 365d 23180 3.9 915

92

BRAVADA ATWOOD TIME

3143029866

Born: June 8, 2017

Milking 60 lbs/day

Bred: Sept. 5, 2019 to Maverick Crush
94H017998

Braedale Goldwyn

CAN 10705608 GP-CAN GM 12/11 CD TY TV TL

PTA -290M +14F +3P 99R 8/19

PTA +1.71T +1.45UDC +1.34FLC GTPI +1860G

MD-Delight Durham Atlee-ET

131704103 Excellent-92 EEEEE GMD DOM

3-11 2x 365d 38290 5.5 2091 3.1 1177

• All-American Sr 3-Yr-Old Cow 2005

Regancrest S Braxton-ET

61898423 Excellent-95 TR TY TV TL TD

PTA +992M -10F +2P 99R 8/19

PTA +2.50T +.76UDC +.80FLC GTPI +1385G

Flambeau-Manor Ito Niaomi

138466820 Excellent-91 EX-MS 2E

5-11 2x 305d 26320 4.0 1040 3.1 808

4-10 2x 305d 26270 3.9 1022 3.0 798

8-10 2x 305d 25670 4.2 1079 30 780

Life: 2386d 178430 4.2 7450 3.2 5732

Maple-Downs-I G W Atwood-ET

CAN 8956379 Excellent-90 TR TP TV TL TY TD

PTA +68M 32F +6P 99R 8/19

PTA -0.7PL 3.05SCS -4.4DPR 9.7%DCE

PTA +3.70T +2.58UDC +2.73FLC 99R 8/19

GTPI +1877G

Flambeau-Manor Brax Norma

142527357 Good Plus-81 @ 3-10

2-10 2x 305d 15820 4.0 627 3.1 490

3rd Dam

Flambeau-Manor Nikki EX-92 VEEEE 3E DOM

4-08 2x 305d 27760 4.3 1194 3.3 905

Life: 1859d 132270 4.3 5679 3.3 4351

4th Dam

Larigan Leadman Holly VG-87 VG-MS

6-05 2x 305d 29530 3.0 893 3.0 885

Life: 1958d 171930 3.2 5515 3.1 5283

Larigan Mandingo Rora Hulda VG-88 EX-MS

3-04 2x 314d 20380 46 941 3.4 703

Life: 1687d 100370 4.4 4445 3.4 3445

93

LARBUCKS MONTROSS MINDY

3143029868

Born: June 17, 2017

Fresh: July 20, 2019

Milking 66 lbs/day SCC 13

Mountfield SSI Dcy Mogul-ET

3006972816 EX-93 GM 8/15 TR TP TC TY TL TD

PTA +1086M +71F +36P 99R 8/19

PTA +2.19T +3.13UDC +2.01FLC GTPI +2335G

Unique-Style Bolton Money

139121711 Excellent-93 EEEEE 2E GMD DOM TM TY

3-01 3x 365d 38430 4.2 1614 3.4 1320

2-00 2x 360d 25540 3.7 950 3.3 842

Comestar Lauthority-ET

CAN 103455217 CD TY TL

PTA +218M +20F +9P 99R 8/19

PTA +2.54T +1.36UDC +1.12FLC GTPI +1846G

Peach-State Bltn Roxanne-ET

63335776 Very Good-88 VG-MS @ 4-02

2-04 3x 305d 24290 4.0 961 2.9 713

Bacon-Hill Montross-ET

71703339 Excellent-92 GM 8/18 TR TP TC TY TV TL

PTA +2571M +67F +75P 99R 8/19

PTA +3.7PL 3.11SCS -0.9DPR 4.7%DCE

PTA +1.71T +2.22UDC +.96FLC 99R 8/19

GTPI +2460G

Central-GA Lthrtly Roxy-ET

142100024 Very Good-86 VG-MS @ 4-10

3rd thru 12th Dams

Croaky-Pond Juror-Bond Roxy EX-90 EEVVE 2E

3-00 2x 305d 23460 4.0 929 3.1 718

Croaky-Pond Durham Roxy EX-92 2E

5-03 2x 365d 35940 3.1 1114 2.9 1037

Life: 1358d 100530 3.3 3341 3.0 2971

Croaky-Pond Encore Randi-ET EX-90 VEVEE

5-05 2x 365d 22430 3.2 723 3.0 670

Lylehaven-G Elev Randi VG-85 VVVVV

5-05 2x 365d 29470 3.6 1051 3.0 895

Life: 2071d 142759 3.5 4967 3.1 4404

C Hanoverhill Tempo Roxy-ET VG-88 VVEV

4-01 2x 321d 22480 3.8 857 3.1 683

Hanover-Hill Astro Roxie EX-91 VEEE GMD DOM

8-06 2x 365d 35922 3.7 1340 3.0 1069

Life: 2826d 216932 3.8 8234 3.2 4291

Mil-R-Mor Roxette EX-90 EEEV GMD DOM 30*

7-01 2x 365d 24530 4.7 1153

Life: 2150d 121417 4.7 5725

C Glenridge Citation Roxy EX-97 4E GMD *6 STAR

10-1 2x 365d 25280 4.2 1061

Life: 3620d 209784 4.5 9471

'Queen of the Breed I & II'

C Norton Court Model Vee EX-90 *6 STAR

Life: 4183d 218629 3.9 8581

• All-American Produce of Dam 1977 - 1979

Norton Court Reflection Val VG-85 *5 STAR

Life: 14 Lact 249583 3.7 9295

94

GRADE HOLSTEIN

Dry

Due: October 25, 2019 to Kenmore Loyal P-Red

Regancrest S Braxton-ET

61898423 Excellent-95 TR TY TV TL TD
 PTA +992M -10F +2P 99R 9/19
 PTA -2.9PL 3.09SCS -5.5DPR +7.0%DCE
 PTA +2.49 50T +.76UDC +.80FLC 99R 9/19
 GTPI +1385G

Grade Holstein

95 MALE

KENMORE 387 P-RED

3147771062 PO RC
 Born: May 19, 2018
 GTPI +2490G
 PTA +2064M +56F +68P 75R 8/19
 PTA +694NM -.07%F +.02%P
 PTA +5.4PL 2.99SCS -0.5DPR 3.7%DCE
 PTA +1.81T +1.88UDC +1.35FLC 74R 8/19

Bacon-Hill Pety Modesty-ET

3013654627 Very Good-86 GM 8/18 TR TP TC TV TY
 PTA +785M +70F +38P 99R 8/19
 PTA +.89T +2.09UDC +1.32FLC GTPI +2464G

Ms Sunview Relief Sundew-ET

3012643765 Very Good-87 VG-MS GMD DOM TL TD
 2-01 4x 365d 35340 4.0 1405 3.2 1144
 3-06 3x 365d 30400 3.8 1142 3.1 951

S-S-I Montross Jedi-ET

3123886035 Excellent-93 GM 8/18 TR TP TC TY TV TL
 PTA +2631M +40F +87P 99R 8/19
 PTA +1.51T +1.68UDC -.36FLC GTPI +2554G

Bravada Olympian Escort-ET

56629692 Very Good-89 EVVVE
 GTPI +2218G +2.14T 8/19

Holyland Simplicity-P-RC-ET

3136246981 RC PC TC TY TV TL TD
 PTA +1318M +71F +48P 80R 8/19
 PTA +6.0PL 2.92SCS -0.5DPR 3.8%DCE
 PTA +2.10T +2.48UDC +1.87FLC 79R 8/19
 GTPI +2537G

Bravada Jedi Faith-ET

3137164762 RC TC TL TD
 GTPI +2509G +2032M +72P 8/19
 Sells as Lot 68

3rd Dam

T-Gen-AC Drearys Emma-ET VG-86 VG-MS
 2-08 2x 305d 22310 4/2 937 3.8 832

4th Dam

Ronelee Boliver Dreary-ET VG-86 VG-MS DOM
 2-04 2x 365d 27970 3.9 1102 3.5 989

5th Dam

Ronelee Outside Dabble-ET EX-91 2E GMD DOM
 5-03 3x 365d 44530 3.6 1612 3.1 1397
 Life: 2021d 185730 3.6 6757 3.2 5966

6th Dam

Ronelee Rudolph Dimple EX-93 EEEEE 2E DOM
 5-08 3x 365d 45290 3.7 1713 3.1 1428
 Life: 1582d 164010 3.6 5900 3.2 5284

7th Dam

Select Mark Dolly EX-95 EEEEE 4E GMD DOM
 6-07 3x 365d 45870 4.0 1846 3.1 1431
 Life: 3295d 276300 3.6 9992 3.2 8964

8th Dam

Select Southwind Dinah EX-91 EEEEE 2E
 5-11 3x 365d 30080 3.7 1124 3.3 981
 Life: 1505d 103810 3.9 4010 3.3 3456

9th Dam

Select Mars Tony Diana VG-86 VG-MS
 3-04 2x 365d 26200 4.2 1112 3.5 916

10th Dam

Dinah Select Wayne Dixie VG-85
 3-07 2x 305d 23460 4.0 935 3.4 789



KHW REGIMENT APPLE-RED-ET EX-96 4E DOM
3RD DAM OF LOT 96

96 MALE

• Service sire for numerous females in catalog

Woodcrest King Doc-ET

3132417775 Excellent-90 TR TP TC TY TV TL TD
 PTA +1565M +71F +53P 80R 8/19
 PTA +2.3PL 2.91SCS +0.3DPR 4.2%DCE
 PTA +3.93T +2.83UDC +2.15FLC 79R 8/19
 GTPI +2600G

Ri-Val-Re Mrs Delta-ETS

3126003430 Very Good-86 VG-MS @ 3-04
 GTPI +2524G +3.09UDC 8/19
 Sells as Lot 1

KENMORE DOC HOLLIDAY-ET

3147771017 TR TP TC TL TD 99%RHA-NA
 Born: December 23, 2017
 GTPI +2660G
 PTA +1633M +70F +62P 76R 8/19
 PTA +693NM +.03%F +.04%P
 PTA +3.6PL 2.88SCS -0.2DPR 5.2%DCE
 PTA +3.56T +3.19UDC +2.41FLC 75R 8/19
 PTA +171FE +0.2FI 8.7%SCE

Morningview MCC Kingboy-ET

72044077 Excellent-92 TR TP TC TY TV TL TD
 PTA +1356M +46F +39P 99R 8/19
 PTA +2.94T +2.46UDC +1.10FLC GTPI +2371G

WCD-ZBW Mack Daddy-ET

3012506777 Very Good-88 VEVVV TR TL TD
 1-11 3x 365d 37410 3.1 1154 3.2 1188

Mr Mogul Delta 1427-ET

72128216 GM 8/19 TR TC TY TV TL TD
 PTA +1613M +88F +54P 99R 8/19
 PTA +2.12T +2.82UDC +1.48FLC GTPI +2698G

Ms Apples MC Valentine-ET

71259307 Excellent-90 EX-MS RC TL TD
 4-10 2x 334d 29600 4.8 1410 3.7 1102
 2-03 2x 365d 28250 4.5 1264 3.5 976
 3-09 2x 338d 27710 4.4 1213 3.4 952

3rd Dam

KHW Regiment Apple-Red-ET EX-96 4E DOM
 9-01 2x 365d 36750 4.3 1582 3.5 1280
 Life: 2898d 240640 4.7 11394 3.7 9013
 • Unanimous All-American 2006, 2011, 2013

4th Dam

Kamps-Hollow Altitude-ET EX-95 2E DOM RC CV
 7-00 2x 365d 39690 4.7 1849 3.5 1385
 Life: 1844d 144460 4.4 6295 3.7 5288

5th Dam

Clover-Mist Alisha-ET EX-93 3E DOM
 8-07 2x 365d 36920 4.2 1553 3.4 1258
 Life: 2999d 226470 4.7 10659 3.6 8149

6th Dam

Clover-Mist Augy Star-ET EX-94 4E DOM
 7-10 2x 365d 43140 5.0 2136 3.3 1421
 Life: 2486d 206250 4.7 9793 3.5 7187

7th Dam

D-R-A August EX-96 4E DOM
 8-05 3x 365d 27460 4.3 1187 3.2 871
 Life: 3443d 190200 4.4 8281 3.5 4818
 • Nominated All-American Aged Cow 1986

8th Dam

D-R-A Ideal Precious Leader EX-90 2E
 Life: 2456d 133250 4.0 5308

9th Dam

D-R-A Princess Lad Leader EX-90 3E

Kenmore Holsteins

Index

BOSSIDE REDSTAR 9616-RED-ET	15	KENMORE HEINZ HONEY-TW	83
BRAVADA AKOYL EVERGREEN-ET	73	KENMORE HEIRLOOM-ET	3
BRAVADA ATWOOD TIME	92	KENMORE HT ASTRO	21
BRAVADA DAMARIS APRICOT-ET	88	KENMORE JEDI ANGEL-ET	48
BRAVADA DAMARIS DEBBIE-ET	56	KENMORE JEDI ASHTON-ET	51
BRAVADA DAMARIS DIME-ET	58	KENMORE JEDI CALI-ET	50
BRAVADA DAMARIS DREAMER-ET	57	KENMORE JEDI LEAH-ET	49
BRAVADA DEARING DABBLE-ET	61	KENMORE KR GOLDMINE-ET	9
BRAVADA DEARING DARLA 210-ET	62	KENMORE LOYOLA CHARITY-ET	29
BRAVADA DEARING ESSENCE-ET	64	KENMORE LOYOLA LYLA-P	31
BRAVADA DEARING EXCITE-ET	63	KENMORE LOYOLA SHAKER	45
BRAVADA DELTA AMBER	89	KENMORE LUCKY STRIKE-RED-ET	2
BRAVADA DELTA DEZ-ET	54	KENMORE MIDNIGHT ONYX	25
BRAVADA DELTA ELEVATE-ET	55	KENMORE MLT DIVINE P-ET	27
BRAVADA DOORSOPEN BENDER-ET	59	KENMORE MLT DUCHESS-RED-ET	28
BRAVADA JEDI ELITE-ET	69	KENMORE MONTROSS ARMOR	22
BRAVADA JEDI ESTHER-ET	70	KENMORE MULTITUDE PIXY-RED	43
BRAVADA JEDI FAITH-ET	68	KENMORE MULTITUDE SLICE P	38
BRAVADA JEDI PRINCESS-ET	67	KENMORE MW AMBROSIA-RED-ET	5
BRAVADA LOYOLA LAYLA	74	KENMORE MW AWESOME-ET	6
BRAVADA MIDNIGHT MISSION-ET	65	KENMORE MW CAST 277-ET	53
BRAVADA MODESTY ANNIE-ET	66	KENMORE OHARE TIPSYP-ET	76
BRAVADA MODESTY ECHO-ET	71	KENMORE OLYMPIANA	18
BRAVADA OLYMPIAN ELLYANN-ET	72	KENMORE OLYMPIAN DEDE-ET	24
BRAVADA SUPERSHOT EMBER-ET	60	KENMORE OLYMPIAN SALSA-ET	23
GRADE HOLSTIEN	94	KENMORE PAT PRISTINE-RED	90
KENMORE 387 P-RED	95	KENMORE PETY PENNY	46
KENMORE ABSOLUTE SPARK	39	KENMORE ROYAL QUEEN P	91
KENMORE ADIRONDACK-RED	19	KENMORE SF CLOUD 9-ET	47
KENMORE APPLE RAE-RED-ET	20	KENMORE SHOWTIME ZIP 154	80
KENMORE APPRENTICE ADDY-ET	11	KENMORE SKY ADRIANNA-ET	8
KENMORE APPRENTICE ALEXA-ET	10	KENMORE SKYSCRAPER-ET	7
KENMORE ARMANI AUTUMN-RED-ET	33	KENMORE SOLTICE 295-ET	52
KENMORE ARMANI SADDLE 279	32	KENMORE SWEET 16-ET	12
KENMORE ARMANI SILVER-RED-ET	35	KENMORE TAKES2 2TAMGO	40
KENMORE ARMANI SIZZLE-RED	36	KENMORE TALLADEGA	79
KENMORE ARMANI SYMBOL-ET	34	KENMORE WHITE STAR-ET	30
KENMORE ARMANI TRICK-RED	81	KENMORE ZUMBA DISC P	42
KENMORE CINDERELLA-ET	14	LARBUCKS COCO-ET	84
KENMORE COLT 45 TAYA-RED-ET	77	LARBUCKS DISTILLER CHEYSA	87
KENMORE COLT 45 TREAT-ET	75	LARBUCKS HT STARPOWER	86
KENMORE DOC HOLLIDAY-ET	96	LARBUCKS MONTROSS MINDY	93
KENMORE DOORSOPEN BREEZE-ET	44	LARBUCKS TSA PAT DOWN-RED	78
KENMORE DOUBLE DICE-ET	36	LARBUCKS WILLPOWER CHARM	85
KENMORE DRACO ALLOY-ET	37	MILLER-FF HEADLINER ELSA	17
KENMORE ELITE 8-ET	13	MISS SHAN DETOX	16
KENMORE HEINZ HANNAH	41	RI-VAL-RE LIL APPLE-ETS	4
KENMORE HEINZ HAPPY-TW	82	RI-VAL-RE MRS DELTA-ETS	1